



G0306 Modbus to DP Gateway User Manual



Microcyber Corporation

Caution

1. Please don't take off/install gateway at random.
2. Please check if the power of gateway meets the power request in the User Manual.

Version

V1.2

Disclaimer of Liability

We have reviewed the contents of this publication to ensure consistency with the hardware and software described. Since variance cannot be precluded entirely, we cannot guarantee full consistency. However, the information in this publication is reviewed regularly and any necessary corrections are included in subsequent editions.

Microcyber Corporation 2015

The technical data may change at any time.

Table of Contents

Section 1. Overview	1
1.1 Device Classification.....	1
1.2 Structure.....	2
1.2.1 Gateway Outline Dimensional Drawing.....	2
1.2.2 Gateway Structural Drawing.....	2
Section 2. Installation	3
2.1. DIN guide rail installation	3
2.2. Gateway Interface.....	3
2.2.1 Power interface.....	3
2.2.2 Modbus-RS485 interface (suitable for GW-MODB-DP-RS485)	3
2.2.3 Modbus-RS232 interface (suitable for GW-MODB-DP-RS232)	3
2.2.4 PROFIBUS DP bus interface	3
2.2.5 PROFIBUS address configuration interface.....	4
2.2.6 LED	4
2.2.7 Special function interface	4
Section 3. Working Principle	5
3.1 Gateway as Modbus Master (G0306-MS)	5
3.2 Gateway as Modbus slave station (G0306-SS)	6
Section 4. Gateway Configuration	7
4.1 Topological Structure.....	7
4.1.1 Network Topology.....	7
4.1.2 Cable and Connector.....	7
4.2 Set Gateway Address	7
4.3 Gateway circulation configuration.....	8
4.3.1 GSD file specification	8
4.3.2 Installation of GSD.....	21
4.3.3 Use GSD file	22
Section 5. Maintenance	53
Section 6. Technical Specifications	55
6.1 Basic Parameters.....	55
6.2 Performance Index.....	55
6.3 Physical Characteristics.....	55
6.4 Default Communication Parameters.....	55
6.5 Supportive Modbus Function Code	55
Appendix A Modbus Communication Protocol	56
A.1 Modbus Communication Protocol.....	56
A.2 Points of Modbus Protocol.....	56

A.3 Modbus Exception Response	57
A.4 Modbus Storage Area	57
A.5 Modbus Function Codes	58
A.5.1 01 (0x01) Read Coils	59
A.5.2 02 (0x02) Read Discrete Inputs	59
A.5.3 03 (0x03) Read Holding Registers	59
A.5.4 04 (0x04) Read Input Registers	60
A.5.5 05 (0x05) Write Single Coil	60
A.5.6 06 (0x06) Write Single Register	60
A.5.7 15 (0x0F) Write Multiple Coils	61
A.5.8 16 (0x10) Write Multiple Registers	61
Appendix B Model Selection Table of G0306 Modbus to DP Gateway	62

Figures Directory

Figure 1 G0306 Modbus to DP Gateway.....	1
Figure 2 Gateway Outline Dimensional Drawing (112*70*50, unit mm)	2
Figure 3 Gateway Structural Drawing	2
Figure 4 DIN Guide Rail Installation	3
Figure 5 Gateway System Connection Diagram.....	5
Figure 6 Gateway Functional Block Diagram (G0306-MS)	5
Figure 7 gateway diagram (G0306-SS)	6
Figure 8 RS485 Transmission Technology Wiring and Bus Terminator.....	7
Figure 9 GSD File Window	22
Figure 10 Successful Installation	22
Figure 11 Correctly Installed Devices	23
Figure 12 Device property configuration	23
Figure 13 Device Configuration.....	24
Figure 14 G0306-MS Configuration of Device User Parameter	24
Figure 15 Send Receive State Exchange Diagram	25
Figure 16 Add“read 24 bits(0xxxx)”Module.....	27
Figure 17 Configuration of“read 24 bits(0xxxx)” Module User Parameter.....	27
Figure 18 Corresponding Relation of PROFIBUS Address and Modbus Address	28
Figure 19 Add“read 4 Words(3xxxx)”Module	28
Figure 20 Configuration of“read 4 Words(3xxxx)”Module User Parameter	29
Figure 21 Corresponding Relation of PROFIBUS Address and Modbus Address	29
Figure 22 Add “write 16 bits(0xxxx)” Module.....	30
Figure 23 Configure User Parameters of “write 16 bits(0xxxx)” Module	30
Figure 24 Corresponding Relations between PROFIBUS Address and Modbus Address.....	31
Figure 25 Add “write 4 Words(4xxxx)”Module	32
Figure 26 Configure User Parameters of “write 4 Words(4xxxx)” Module.....	33
Figure 27 Corresponding Relations between PROFIBUS Address and Modbus address	34
Figure 28 Add “force single bit (05H Command)”Module	34
Figure 29 Configure User Parameters of “force single bit (05H Command)” Module.....	35
Figure 30 Corresponding Relations between PROFIBUS Address and Modbus Address.....	36
Figure 31 Add “set single word (06H Command)”Module	36
Figure 32 Configure User Parameters of “set single word (06H Command)” Module	37
Figure 33 Corresponding Relations between PROFIBUS Address and Modbus Address.....	38
Figure 34 Configure User Parameters of “3.MODBUS Slave Monitoring” Device	38

Figure 35 Add “8Bits MODBUS Slaves Status” Module.....	39
Figure 36 Configure Slave Address to Be Monitored	40
Figure 37 Configure User Parameters of “3.MODBUS Slave Monitoring” Device	41
Figure 38 Add “8Bits MODBUS Slaves Status” Module.....	42
Figure 39 Configure Slave Address to Be Monitored	43
Figure 40 Configure User Parameters of G0306-SS Device.....	44
Figure 41 Sending/Receiving Status Transition Diagram	45
Figure 42 Add “Input:32 bits(0xxxx)” Module.....	46
Figure 43 Corresponding Relations between Modbus Storage Area 0xxxx and Profibus Input Area	47
Figure 44 Add “Output: 32 bits(1xxxx)” Module.....	48
Figure 45 Corresponding Relations between Modbus Storage Area 1xxxx and Profibus Output Area	48
Figure 46 Add “Input: 4 Words (4xxxx)” Module	49
Figure 47 Corresponding Relations between Modbus Storage Area 4xxxx and Profibus Input Area	50
Figure 48 Add “Output: 4 Words (3xxxx)” module, shown as Figure 48	51
Figure 49 Corresponding Relations between Profibus Output Area and Modbus Storage Area 3xxxx.....	51
Figure 50 Modbus Protocol Model	56
Figure 51 Modbus Function Codes	58

Table Directory

Table 1 Modbus storage area	6
Table 2 Transmission Rate and Scope of Cable Type A.....	7
Table 3 G0306-MS GSD Module Description	8
Table 4 G0306-MS Device User Parameter.....	15
Table 5 G0306-MS Module (4-143、176-199) User Parameter Table.....	16
Table 6 G0306-MS Module (144-175) User Parameter Table.....	17
Table 7 G0306-MS Module 200 User Parameter Table	17
Table 8 G0306-MS Module 201 User Parameter Table	17
Table 9 G0306-MS Detailed State Module (202-203) User Parameter Table	17
Table 10 G0306-MS Detailed State Module (204-205) User Parameter Table	17
Table 11 G0306-MS Detailed State Module (206-207) User Parameter Table	17

Table 12 G0306-MS Detailed State Module (208-209) User Parameter Table	17
Table 13 G0306-SS GSD module description	18
Table 14 G0306-SS device user parameter table	20
Table 15 Modbus storage area and Profibus input output data relief area mapping relation	21
Table 16 Overall Module Format	25
Table 17 Control Module Format.....	26
Table 18 status of slave station 10 and 11 monitored in PROFIBUS address IB4	40
Table 19 Status of Some Slave Station Monitored.....	43
Table 20 Format of Control Module	45
Table 21 Status List for LED Indicating Light	53
Table 22 Test List for Configuration Errors	53
Table 23 Character Transfer Mode Table	56
Table 24 Modbus Message RTU Format	57
Table 25 Request Message Sent by Master Station (Hex)	57
Table 26 Response Message Returned by Slave Station (Hex)	57
Table 27 Modbus Exception Response Code	57
Table 28 Modbus Storage Are	57
Table 29 Master Station Request Message Format (Hex)	59
Table 30 Slave Station Response Message Format (Hex)	59
Table 31 Master Station Request Message Format (Hex)	59
Table 32 Slave Station Response Message Format (Hex)	59
Table 33 Master Station Request Message Format (Hex)	59
Table 34 Slave Station Response Message Format (Hex)	59
Table 35 Master Station Request Message Format (Hex)	60
Table 36 Slave Response Message Format (Hex).....	60
Table 37 Master Station Request Message Format (Hex)	60
Table 38 Slave Response Message Format (Hex, return original message).....	60
Table 39 Master Station Request Message Format (Hex)	60
Table 40 Slave Station Response Message Format (Hex, return original message)	60
Table 41 Master Station Request Message Format (Hex)	61
Table 42 Slave Station Response Message Format (Hex)	61
Table 43 Master Station Request Message Format (Hex)	61
Table 44 Slave Station Response Message Format (Hex)	61

Section 1.Overview

Name: Modbus to DP Gateway

Model: G0306

This gateway realizes the conversion function from Modbus RTU to PROFIBUS DP, making multiple slave station devices that conform to Modbus RTU communication regulation access to PROFIBUS DPnetwork. Modbus can be as master or slave, and this function can be realized by a special function button.



Figure 1 G0306 Modbus to DP Gateway

1.1 Device Classification

This gateway has two models based on Modbus interface difference (the same as actual model selection):

Model Selection	Modbus Interface
GW-MODB-DP-RS485	RS485
GW-MODB-DP -RS232	RS232

This gateway has following model selection based on communication mode (function classification, easy for file description by using following name, not actual model selection. Refer to appendix for actual model selection):

Model Selection	Modbus	PROFIBUS
G0306 -MS	Master station	Slave station
G0306 -SS	Slave station	Slave station

Note:

- 1) V1.0 version only realizes GW-MODB-DP-RS485 version. GW-MODB-DP-RS232 version will be added soon.
- 2) G0306 gateway can realize the shift between G0306-MS and G0306-SS via function button based on user requirement. Please refer to 2.27 for its method.

1.2 Structure

1.2.1 Gateway Outline Dimensional Drawing

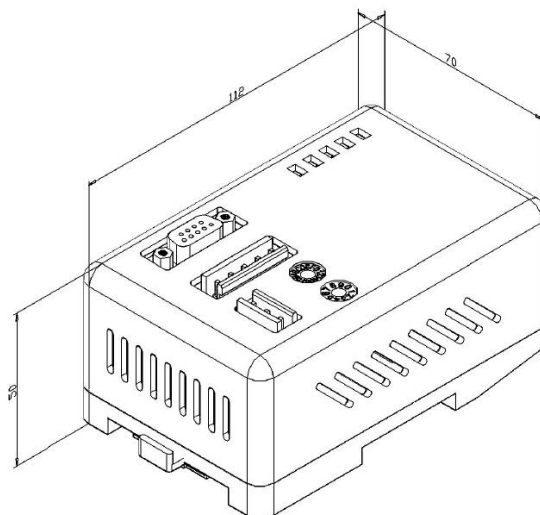


Figure 2 Gateway Outline Dimensional Drawing (112*70*50, unit mm)

1.2.2 Gateway Structural Drawing

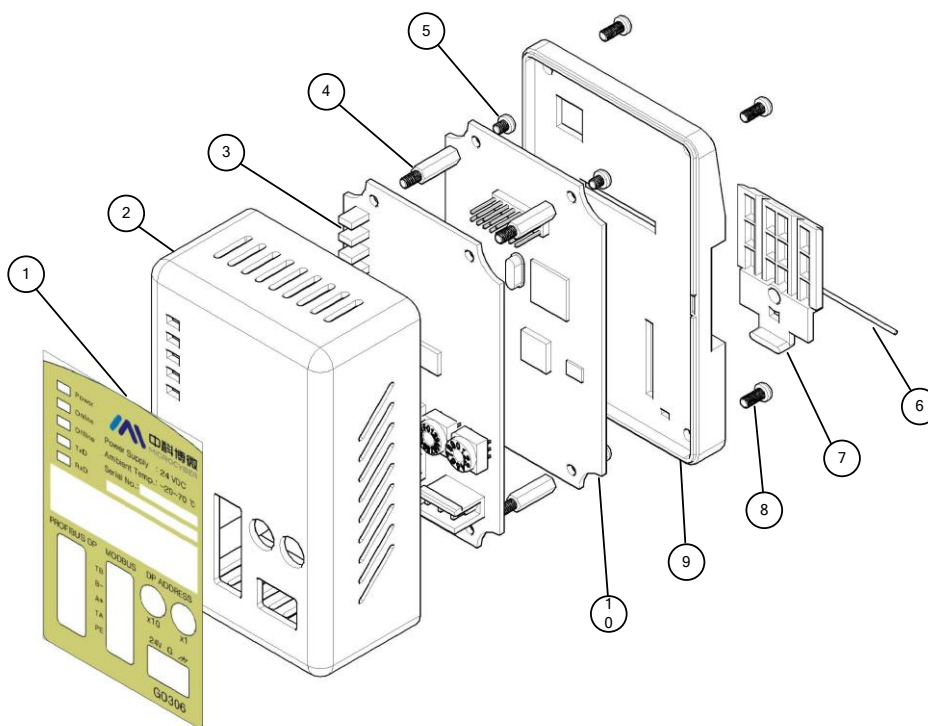


Figure 3 Gateway Structural Drawing

1	film	2	Upper cover	3	Interface board	4	Hexagonal prisms
5	Wide brim screw	6	Iron wire	7	clip	8	Wide brim screw
9	base	10	Communication board				

Section 2.Installation

2.1. DIN guide rail installation

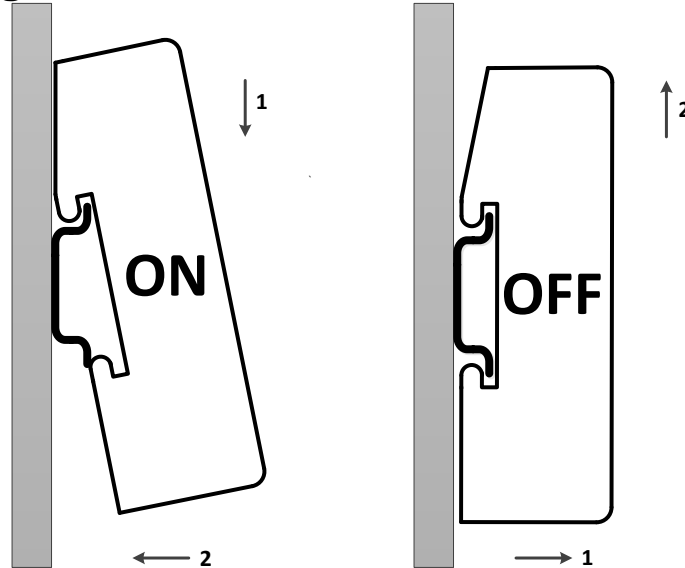
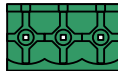


Figure 4 DIN Guide Rail Installation

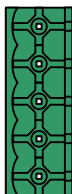
2.2. Gateway Interface

2.2.1 Power interface



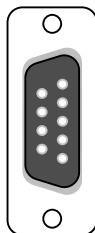
No.	Signal	Description
1	24V	connect 24VDC+
2	G	connect 24VDC-
3	PE	connect TP shield

2.2.2 Modbus-RS485 interface (suitable for GW-MODB-DP-RS485)



No.	Signal	Description
1	TB	Connect with B- short circuit enabled terminal
2	B-	Connect Modbus bus B
3	A+	Connect Modbus bus A
4	TA	Connect with A+ short circuit enabled terminal
5	PE	connect TP shield

2.2.3 Modbus-RS232 interface (suitable for GW-MODB-DP-RS232)

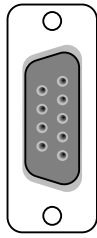


Pin	Signal	Description
1	NC	Hang in the air
2	TxD	Connect user device RxD
3	RxD	Connect user device TxD
4	NC	Hang in the air
5	GND	Connect user device GND
6-9	NC	Hang in the air

Note: user should make RS232 cable based on interface definition

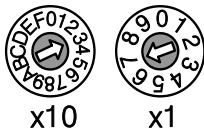
2.2.4 PROFIBUS DP bus interface

Pin	Signal	Description
-----	--------	-------------



1-2	NC	Hang in the air
3	RxD/TxD-P	Receive/send data, wire B (red color)
4	CNTR-P	Repeater direction control
5	DGND	Data ground (VP reference voltage)
6	VPa	Power supply +5V (e.g. used for bus terminator)
7	NC	Hang in the air
8	RxD/TxD-N	Receive/send data, wire A (green color)
9	NC	Hang in the air

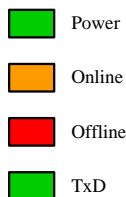
2.2.5 PROFIBUS address configuration interface



Address dial switch	Description
16 bits rotary knob dial switch x10	Each scal represents 10, range 0-160;
10 bits rotary knob dial switch x1	Each scal represents 1, range 0-9;

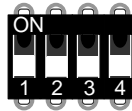
Note: When address is bigger than 125, fixed address is 125.
As shown in the figure, address=3*10+7*1=37

2.2.6 LED



LED name	Color	Description
Power	green	device power supply LED
Online	yellow	PROFIBUS in data-exch state
Offline	Red	PROFIBUS not in in data-exch state
TxD	Green	Modbus send LED
RxD	yellow	Modbus receive LED

2.2.7 Special function interface



No.	Terminal name	Terminal usage
1	MS	Modbus master-slave exchange Off: G0306-MS On: G0306-SS
2	Not Used	Not in use
3	Not Used	Not in use
4	Not Used	Not in use

Section 3. Working Principle

G0306 Modbus to DP Gateway supports both Modbus RTU and PROFIBUS DP. It is PROFIBUS DP slave device. when serving as Modbus master (G0306-MS), it can connect at most 31 Modbus slave station into PROFIBUS PA network theoretically (it should be 485 bus environment, and we suggest less than 10 Modbus slave device to ensure communication quality) .

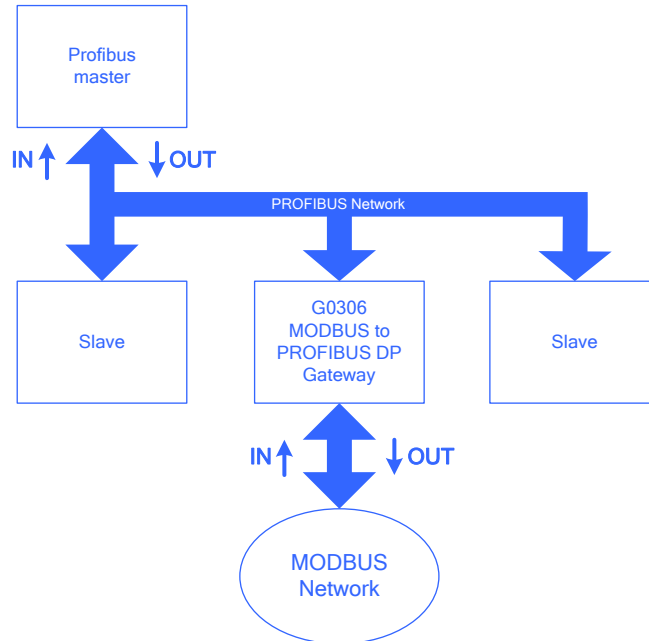


Figure 5 Gateway System Connection Diagram

3.1 Gateway as Modbus Master (G0306-MS)

Working mechanism of G0306 Modbus to DP gateway MS is by model configuration to realize data conversion from Modbus data to DP data. Each module can configure one Modbus message. There are totally 39 slots and 209 modules. Among them, 1 and 2 slot has fixed function. There are another 37 slots available. Each slot can configure one module, which means it can configure at most 37 Modbus messages.

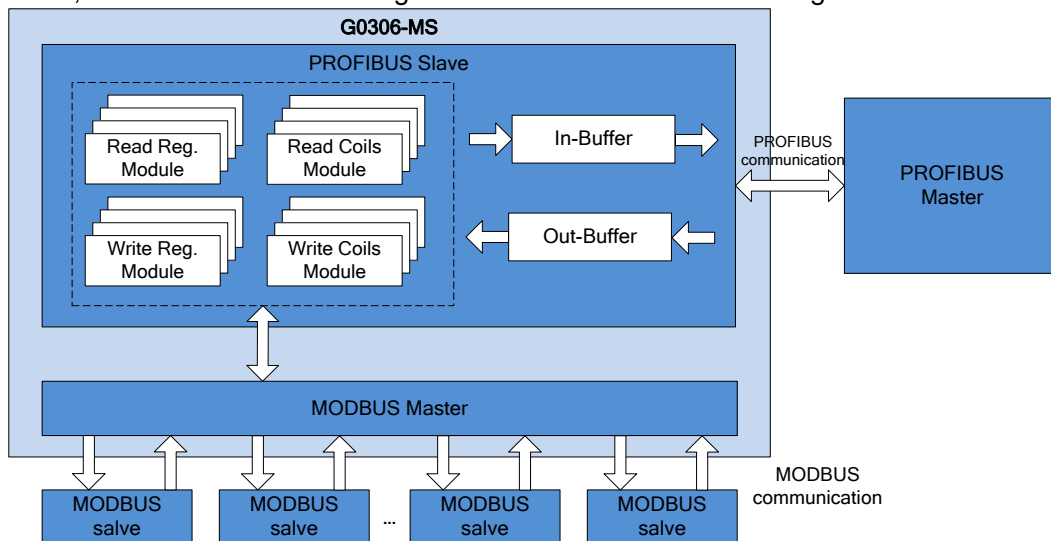


Figure 6 Gateway Functional Block Diagram (G0306-MS)

3.2 Gateway as Modbus slave station (G0306-SS)

G0306-SS working mechanism is to realize the mapping from Profibus input and output relief area to Modbus storage area separately via module configuration. This makes it easier for Modbus master to read required data from corresponding Modbus storage area.

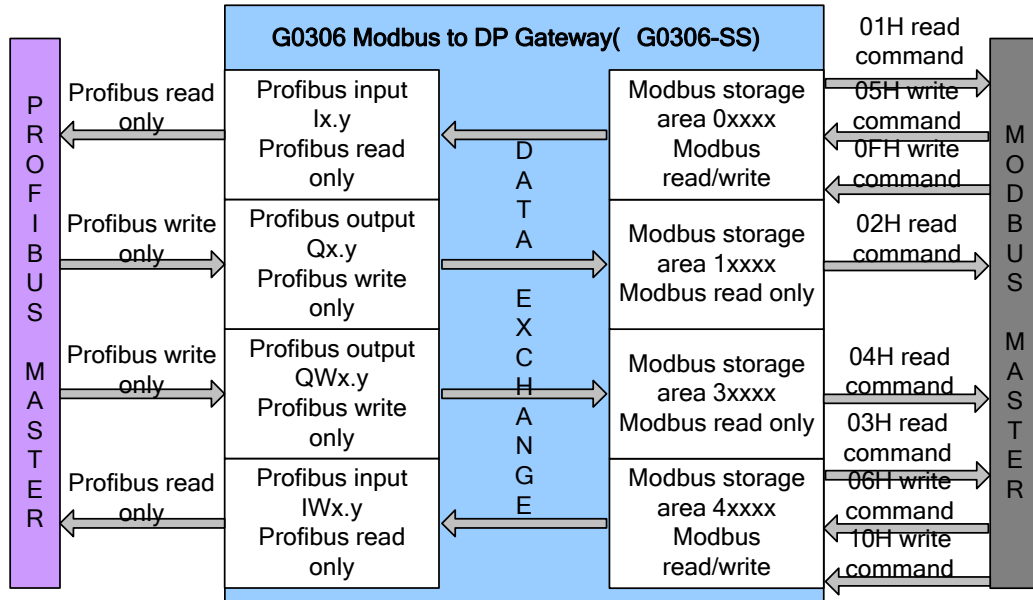


Figure 7 gateway diagram (G0306-SS)

G0306-SS has 20 slots and 67 modules in all. Among them, slot 1 and 2 has fixed function and there are other 18 slots can be used. Each slot can configure one module. That is to say at most 18 kinds mapping relation from Profibus input output relief area to Modbus storage area can be built.

G0306-SS is the same as other Modbus slave device, having four Modbus storage area:

Table 1 Modbus storage area

Storage indentification	Name	Type	Modbus master read/write	Storage cell address scope
0xxxx	coil	Bit	Read/write	00001~01952 , totally 1952bit=244byte
1xxxx	Discrete magnitude input	Bit	Read only	10001~11952 , totally 1952bit=244byte
4xxxx	Holding register	Word	Read only	40001~40122 , totally 122word=244byte
3xxxx	Input register	Word	read/write	30001~30122 , totally 122word =244byte

Section 4. Gateway Configuration

4.1 Topological Structure

4.1.1 Network Topology

G0306 Modbus to DP gateway use RS485 transmission technology, with rate from 9.6kbit/s to 12Mbit/s. All devices are connected to one bus, with the same rate. There can be at most 32 stations (master or slave) in a bus segment. There's a power bus terminator in each bus segment's front and end. Two bus terminators both have always power-on supply to ensure error-free operation. Bus terminator is always connected to device or connector (Note: this gateway PROFIBUS terminal does not have bus termination. Please use connector with terminator.) . If there are more than 32 stations or network need expansion, it's necessary to use a repeater to connect each bus segment.

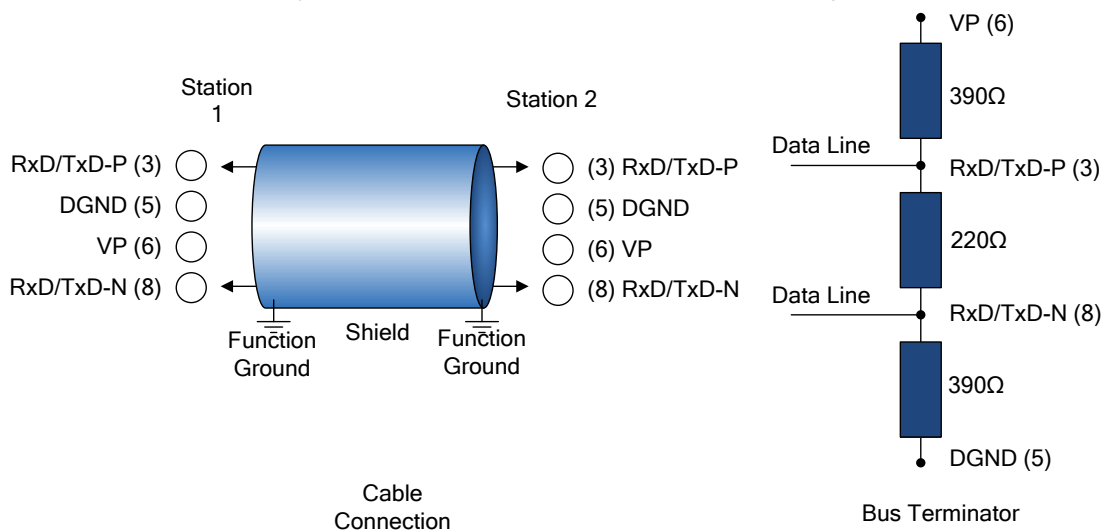


Figure 8 RS485 Transmission Technology Wiring and Bus Terminator

4.1.2 Cable and Connector

For different applications, there are different cables (type A-D) for connection between devices or device and network compents (e.g. segmented coupler, connector and repeater) . When using RS485, PI suggests cable A.

Table 2 Transmission Rate and Scope of Cable Type A

Transmission Rate (kbit/s)	Each bus segmented scope (m)
9.6, 19.2, 45.45, 93.75	1200
187.5	1000
500	400
1500	200
3000, 6000, 12000	100

The values are suitable for A type cable with following features:
 Impedance: 135Ω~165Ω capacitance: ≤20pF/m
 loop resistance: ≤110Ω/km wire diameter: >0.64mm
 cable sectional area: >0.34mm²

4.2 Set Gateway Address

Note: This gateway does not support setting device address via Set_Address Service, but

only support hardware address.

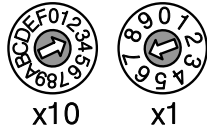
First, please set address when power off.

PROFIBUS address configuration interface includes two dial switches, which are used for setting PROFIBUS address.

Setting Methods:

PROFIBUS bus address= (x10 value of dial switch) *10+ (x1 value of dial switch)

E.g.:



PROFIBUS address = 3*10+7=37

4.3 Gateway circulation configuration

Profibus device cyclic configuration is realized by GSD file. Profibus network master actuates device initialization process by GSD file. Master will send configured data and input utput dataconfiguration to slave station. If no errors, it will begin cyclic data exchange state.

4.3.1 GSD file specification

GSD includes software and hardware version, bus baud rates, cyclic data exchange info etc. Since the gateway has MS and SS difference, Microcyber applies two device ID for G0306-MS and G0306-SS. User can choose GSD file based on actual configuration (refer to 2.2.7).

(1) G0306-MS GSD file specification

GSD name for G0306-MS: MCYB0F1A.GSE。

This GSD includes 39 slots, 209 modules and it supports 237 user parameters at most.

● Module description

Table 3 G0306-MS GSD Module Description

Module no.	Module name	Input data length (byte)	Output data length (byte)	Description
1	empty	0	0	Empty Module
2	status	1	0	Modbus communication status module
3	control	0	1	Modbus communication control module
4	read 8 bits(0xxxx)	1	0	To use function code 1 to read 8 coil data from a certain Modbus slave station
5	read 8 bits(1xxxx)	1	0	To use function code 2 to read 8 discrete magnitude from a certain Modbus slave station
6	read 16 bits(0xxxx)	2	0	To use function code 1 to read 16 coil data from a certain Modbus slave station
7	read 16 bits(1xxxx)	2	0	To use function code 2 to read 16 discrete magnitude from a certain Modbus slave station
8	read 24 bits(0xxxx)	3	0	To use function code 1 to read 24 coil data from a certain Modbus slave station
9	read 24 bits(1xxxx)	3	0	To use function code 2 to read 24 discrete magnitude from a certain Modbus slave station
10	read 32 bits(0xxxx)	4	0	To use function code 1 to read 32 coil data from a certain Modbus slave station
11	read 32 bits(1xxxx)	4	0	To use function code 2 to read 32 discrete magnitude from a certain Modbus slave station
12	read 40 bits(0xxxx)	5	0	To use function code 1 to read 40 coil data from a certain Modbus slave station
13	read 40 bits(1xxxx)	5	0	To use function code 2 to read 40 discrete magnitude from a certain Modbus slave station
14	read 48 bits(0xxxx)	6	0	To use function code 1 to read 48 coil data from a certain Modbus slave station
15	read 48 bits(1xxxx)	6	0	To use function code 2 to read 48 discrete magnitude

Module no.	Module name	Input data length (byte)	Output data length (byte)	Description
				from a certain Modbus slave station
16	read 56 bits(0xxxx)	7	0	To use function code 1 to read 56 coil data from a certain Modbus slave station
17	read 56 bits(1xxxx)	7	0	To use function code 2 to read 56 discrete magnitude from a certain Modbus slave station
18	read 64 bits(0xxxx)	8	0	To use function code 1 to read 64 coil data from a certain Modbus slave station
19	read 64 bits(1xxxx)	8	0	To use function code 2 to read 64 discrete magnitude from a certain Modbus slave station
20	read 72 bits(0xxxx)	9	0	To use function code 1 to read 72 coil data from a certain Modbus slave station
21	read 72 bits(1xxxx)	9	0	To use function code 2 to read 72 discrete magnitude from a certain Modbus slave station
22	read 80 bits(0xxxx)	10	0	To use function code 1 to read 80 coil data from a certain Modbus slave station
23	read 80 bits(1xxxx)	10	0	To use function code 2 to read 80 discrete magnitude from a certain Modbus slave station
24	read 88 bits(0xxxx)	11	0	To use function code 1 to read 88 coil data from a certain Modbus slave station
25	read 88 bits(1xxxx)	11	0	To use function code 2 to read 88 discrete magnitude from a certain Modbus slave station
26	read 96 bits(0xxxx)	12	0	To use function code 1 to read 96 coil data from a certain Modbus slave station
27	read 96 bits(1xxxx)	12	0	To use function code 2 to read 96 discrete magnitude from a certain Modbus slave station
28	read 104 bits(0xxxx)	13	0	To use function code 1 to read 104 coil data from a certain Modbus slave station
29	read 104 bits(1xxxx)	13	0	To use function code 2 to read 104 discrete magnitude from a certain Modbus slave station
30	read 112 bits(0xxxx)	14	0	To use function code 1 to read 112 coil data from a certain Modbus slave station
31	read 112 bits(1xxxx)	14	0	To use function code 2 to read 112 discrete magnitude from a certain Modbus slave station
32	read 120 bits(0xxxx)	15	0	To use function code 1 to read 120 coil data from a certain Modbus slave station
33	read 120 bits(1xxxx)	15	0	To use function code 2 to read 120 discrete magnitude from a certain Modbus slave station
34	read 128 bits(0xxxx)	16	0	To use function code 1 to read 128 coil data from a certain Modbus slave station
35	read 128 bits(1xxxx)	16	0	To use function code 2 to read 128 discrete magnitude from a certain Modbus slave station
36	read 136 bits(0xxxx)	17	0	To use function code 1 to read 136 coil data from a certain Modbus slave station
37	read 136 bits(1xxxx)	17	0	To use function code 2 to read 136 discrete magnitude from a certain Modbus slave station
38	read 144 bits(0xxxx)	18	0	To use function code 1 to read 144 coil data from a certain Modbus slave station
39	read 144 bits(1xxxx)	18	0	To use function code 2 to read 144 discrete magnitude from a certain Modbus slave station
40	read 152 bits(0xxxx)	19	0	To use function code 1 to read 152 coil data from a certain Modbus slave station
41	read 152 bits(1xxxx)	19	0	To use function code 2 to read 152 discrete magnitude from a certain Modbus slave station
42	read 160 bits(0xxxx)	20	0	To use function code 1 to read 160 coil data from a certain Modbus slave station
43	read 160 bits(1xxxx)	20	0	To use function code 2 to read 160 discrete magnitude from a certain Modbus slave station
44	read 168 bits(0xxxx)	21	0	To use function code 1 to read 168 coil data from a certain Modbus slave station
45	read 168 bits(1xxxx)	21	0	To use function code 2 to read 168 discrete

Module no.	Module name	Input data length (byte)	Output data length (byte)	Description
				magnitude from a certain Modbus slave station
46	read 176 bits(0xxxx)	22	0	To use function code 1 to read 176 coil data from a certain Modbus slave station
47	read 176 bits(1xxxx)	22	0	To use function code 2 to read 176 discrete magnitude from a certain Modbus slave station
48	read 184 bits(0xxxx)	23	0	To use function code 1 to read 184 coil data from a certain Modbus slave station
49	read 184 bits(1xxxx)	23	0	To use function code 2 to read 184 discrete magnitude from a certain Modbus slave station
50	read 192 bits(0xxxx)	24	0	To use function code 1 to read 192 coil data from a certain Modbus slave station
51	read 192 bits(1xxxx)	24	0	To use function code 2 to read 192 discrete magnitude from a certain Modbus slave station
52	read 200 bits(0xxxx)	25	0	To use function code 1 to read 200 coil data from a certain Modbus slave station
53	read 200 bits(1xxxx)	25	0	To use function code 2 to read 200 discrete magnitude from a certain Modbus slave station
54	read 208 bits(0xxxx)	26	0	To use function code 1 to read 208 coil data from a certain Modbus slave station
55	read 208 bits(1xxxx)	26	0	To use function code 2 to read 208 discrete magnitude from a certain Modbus slave station
56	read 216 bits(0xxxx)	27	0	To use function code 1 to read 216 coil data from a certain Modbus slave station
57	read 216 bits(1xxxx)	27	0	To use function code 2 to read 216 discrete magnitude from a certain Modbus slave station
58	read 224 bits(0xxxx)	28	0	To use function code 1 to read 224 coil data from a certain Modbus slave station
59	read 224 bits(1xxxx)	28	0	To use function code 2 to read 224 discrete magnitude from a certain Modbus slave station
60	read 232 bits(0xxxx)	29	0	To use function code 1 to read 232 coil data from a certain Modbus slave station
61	read 232 bits(1xxxx)	29	0	To use function code 2 to read 232 discrete magnitude from a certain Modbus slave station
62	read 240 bits(0xxxx)	30	0	To use function code 1 to read 240 coil data from a certain Modbus slave station
63	read 240 bits(1xxxx)	30	0	To use function code 2 to read 240 discrete magnitude from a certain Modbus slave station
64	read 248 bits(0xxxx)	31	0	To use function code 1 to read 248 coil data from a certain Modbus slave station
65	read 248 bits(1xxxx)	31	0	To use function code 2 to read 248 discrete magnitude from a certain Modbus slave station
66	read 256 bits(0xxxx)	32	0	To use function code 1 to read 256 coil data from a certain Modbus slave station
67	read 256 bits(1xxxx)	32	0	To use function code 2 to read 256 discrete magnitude from a certain Modbus slave station
68	read 1 Words(4xxxx)	2	0	To use function code 3 to read 1 register data from a certain Modbus slave station
69	read 1 Words(3xxxx)	2	0	To use function code 4 to read 1 register data from a certain Modbus slave station
70	read 2 Words(4xxxx)	4	0	To use function code 3 to read 2 register data from a certain Modbus slave station
71	read 2 Words(3xxxx)	4	0	To use function code 4 to read 2 register data from a certain Modbus slave station
72	read 3 Words(4xxxx)	6	0	To use function code 3 to read 3 register data from a certain Modbus slave station
73	read 3 Words(3xxxx)	6	0	To use function code 4 to read 3 register data from a certain Modbus slave station
74	read 4 Words(4xxxx)	8	0	To use function code 3 to read 4 register data from a certain Modbus slave station
75	read 4 Words(3xxxx)	8	0	To use function code 4 to read 4 register data from a

Module no.	Module name	Input data length (byte)	Output data length (byte)	Description
				certain Modbus slave station
76	read 5 Words(4xxxx)	10	0	To use function code 3 to read 5 register data from a certain Modbus slave station
77	read 5 Words(3xxxx)	10	0	To use function code 4 to read 5 register data from a certain Modbus slave station
78	read 6 Words(4xxxx)	12	0	To use function code 3 to read 6 register data from a certain Modbus slave station
79	read 6 Words(3xxxx)	12	0	To use function code 4 to read 6 register data from a certain Modbus slave station
80	read 7 Words(4xxxx)	14	0	To use function code 3 to read 7 register data from a certain Modbus slave station
81	read 7 Words(3xxxx)	14	0	To use function code 4 to read 7 register data from a certain Modbus slave station
82	read 8 Words(4xxxx)	16	0	To use function code 3 to read 8 register data from a certain Modbus slave station
83	read 8 Words(3xxxx)	16	0	To use function code 4 to read 8 register data from a certain Modbus slave station
84	read 9 Words(4xxxx)	18	0	To use function code 3 to read 9 register data from a certain Modbus slave station
85	read 9 Words(3xxxx)	18	0	To use function code 4 to read 9 register data from a certain Modbus slave station
86	read 10 Words(4xxxx)	20	0	To use function code 3 to read 10 register data from a certain Modbus slave station
87	read 10 Words(3xxxx)	20	0	To use function code 4 to read 10 register data from a certain Modbus slave station
88	read 11 Words(4xxxx)	22	0	To use function code 3 to read 11 register data from a certain Modbus slave station
89	read 11 Words(3xxxx)	22	0	To use function code 4 to read 11 register data from a certain Modbus slave station
90	read 12 Words(4xxxx)	24	0	To use function code 3 to read 12 register data from a certain Modbus slave station
91	read 12 Words(3xxxx)	24	0	To use function code 4 to read 12 register data from a certain Modbus slave station
92	read 13 Words(4xxxx)	26	0	To use function code 3 to read 13 register data from a certain Modbus slave station
93	read 13 Words(3xxxx)	26	0	To use function code 4 to read 13 register data from a certain Modbus slave station
94	read 14 Words(4xxxx)	28	0	To use function code 3 to read 14 register data from a certain Modbus slave station
95	read 14 Words(3xxxx)	28	0	To use function code 4 to read 14 register data from a certain Modbus slave station
96	read 15 Words(4xxxx)	30	0	To use function code 3 to read 15 register data from a certain Modbus slave station
97	read 15 Words(3xxxx)	30	0	To use function code 4 to read 15 register data from a certain Modbus slave station
98	read 16 Words(4xxxx)	32	0	To use function code 3 to read 16 register data from a certain Modbus slave station
99	read 16 Words(3xxxx)	32	0	To use function code 4 to read 16 register data from a certain Modbus slave station
100	read 18 Words(4xxxx)	36	0	To use function code 3 to read 18 register data from a certain Modbus slave station
101	read 18 Words(3xxxx)	36	0	To use function code 4 to read 18 register data from a certain Modbus slave station
102	read 20 Words(4xxxx)	40	0	To use function code 3 to read 20 register data from a certain Modbus slave station
103	read 20 Words(3xxxx)	40	0	To use function code 4 to read 20 register data from a certain Modbus slave station
104	read 22 Words(4xxxx)	44	0	To use function code 3 to read 22 register data from a certain Modbus slave station
105	read 22 Words(3xxxx)	44	0	To use function code 4 to read 22 register data from

Module no.	Module name	Input data length (byte)	Output data length (byte)	Description
				a certain Modbus slave station
106	read 24 Words(4xxxx)	48	0	To use function code 3 to read 24 register data from a certain Modbus slave station
107	read 24 Words(3xxxx)	48	0	To use function code 4 to read 24 register data from a certain Modbus slave station
108	read 26 Words(4xxxx)	52	0	To use function code 3 to read 26 register data from a certain Modbus slave station
109	read 26 Words(3xxxx)	52	0	To use function code 4 to read 26 register data from a certain Modbus slave station
110	read 28 Words(4xxxx)	56	0	To use function code 3 to read 28 register data from a certain Modbus slave station
111	read 28 Words(3xxxx)	56	0	To use function code 4 to read 28 register data from a certain Modbus slave station
112	read 30 Words(4xxxx)	60	0	To use function code 3 to read 30 register data from a certain Modbus slave station
113	read 30 Words(3xxxx)	60	0	To use function code 4 to read 30 register data from a certain Modbus slave station
114	read 32 Words(4xxxx)	64	0	To use function code 3 to read 32 register data from a certain Modbus slave station
115	read 32 Words(3xxxx)	64	0	To use function code 4 to read 32 register data from a certain Modbus slave station
116	read 34 Words(4xxxx)	68	0	To use function code 3 to read 34 register data from a certain Modbus slave station
117	read 34 Words(3xxxx)	68	0	To use function code 4 to read 34 register data from a certain Modbus slave station
118	read 36 Words(4xxxx)	72	0	To use function code 3 to read 36 register data from a certain Modbus slave station
119	read 36 Words(3xxxx)	72	0	To use function code 4 to read 36 register data from a certain Modbus slave station
120	read 38 Words(4xxxx)	76	0	To use function code 3 to read 38 register data from a certain Modbus slave station
121	read 38 Words(3xxxx)	76	0	To use function code 4 to read 38 register data from a certain Modbus slave station
122	read 40 Words(4xxxx)	80	0	To use function code 3 to read 40 register data from a certain Modbus slave station
123	read 40 Words(3xxxx)	80	0	To use function code 4 to read 40 register data from a certain Modbus slave station
124	read 42 Words(4xxxx)	84	0	To use function code 3 to read 42 register data from a certain Modbus slave station
125	read 42 Words(3xxxx)	84	0	To use function code 4 to read 42 register data from a certain Modbus slave station
126	read 44 Words(4xxxx)	88	0	To use function code 3 to read 44 register data from a certain Modbus slave station
127	read 44 Words(3xxxx)	88	0	To use function code 4 to read 44 register data from a certain Modbus slave station
128	read 46 Words(4xxxx)	92	0	To use function code 3 to read 46 register data from a certain Modbus slave station
129	read 46 Words(3xxxx)	92	0	To use function code 4 to read 46 register data from a certain Modbus slave station
130	read 48 Words(4xxxx)	96	0	To use function code 3 to read 48 register data from a certain Modbus slave station
131	read 48 Words(3xxxx)	96	0	To use function code 4 to read 48 register data from a certain Modbus slave station
132	read 50 Words(4xxxx)	100	0	To use function code 3 to read 50 register data from a certain Modbus slave station
133	read 50 Words(3xxxx)	100	0	To use function code 4 to read 50 register data from a certain Modbus slave station
134	read 52 Words(4xxxx)	104	0	To use function code 3 to read 52 register data from a certain Modbus slave station
135	read 52 Words(3xxxx)	104	0	To use function code 4 to read 52 register data from

Module no.	Module name	Input data length (byte)	Output data length (byte)	Description
				a certain Modbus slave station
136	read 54 Words(4xxxx)	108	0	To use function code 3 to read 54 register data from a certain Modbus slave station
137	read 54 Words(3xxxx)	108	0	To use function code 4 to read 54 register data from a certain Modbus slave station
138	read 56 Words(4xxxx)	112	0	To use function code 3 to read 56 register data from a certain Modbus slave station
139	read 56 Words(3xxxx)	112	0	To use function code 4 to read 56 register data from a certain Modbus slave station
140	read 58 Words(4xxxx)	116	0	To use function code 3 to read 58 register data from a certain Modbus slave station
141	read 58 Words(3xxxx)	116	0	To use function code 4 to read 58 register data from a certain Modbus slave station
142	read 60 Words(4xxxx)	120	0	To use function code 3 to read 60 register data from a certain Modbus slave station
143	read 60 Words(3xxxx)	120	0	To use function code 4 to read 60 register data from a certain Modbus slave station
144	write 8 bits(0xxxx)	0	1	To use function code 15 to write 1~8 coil data into a certain Modbus slave station
145	write 16 bits(0xxxx)	0	2	To use function code 15 to write 1~16 coil data into a certain Modbus slave station
146	write 24 bits(0xxxx)	0	3	To use function code 15 to write 1~24 coil data into a certain Modbus slave station
147	write 32 bits(0xxxx)	0	4	To use function code 15 to write 1~32 coil data into a certain Modbus slave station
148	write 40 bits(0xxxx)	0	5	To use function code 15 to write 1~40 coil data into a certain Modbus slave station
149	write 48 bits(0xxxx)	0	6	To use function code 15 to write 1~48 coil data into a certain Modbus slave station
150	write 56 bits(0xxxx)	0	7	To use function code 15 to write 1~56 coil data into a certain Modbus slave station
151	write 64 bits(0xxxx)	0	8	To use function code 15 to write 1~64 coil data into a certain Modbus slave station
152	write 72 bits(0xxxx)	0	9	To use function code 15 to write 1~72 coil data into a certain Modbus slave station
153	write 80 bits(0xxxx)	0	10	To use function code 15 to write 1~80 coil data into a certain Modbus slave station
154	write 88 bits(0xxxx)	0	11	To use function code 15 to write 1~88 coil data into a certain Modbus slave station
155	write 96 bits(0xxxx)	0	12	To use function code 15 to write 1~96 coil data into a certain Modbus slave station
156	write 104 bits(0xxxx)	0	13	To use function code 15 to write 1~104 coil data into a certain Modbus slave station
157 8	write 112 bits(0xxxx)	0	14	To use function code 15 to write 1~112 coil data into a certain Modbus slave station
158	write 120 bits(0xxxx)	0	15	To use function code 15 to write 1~120 coil data into a certain Modbus slave station
159	write 128 bits(0xxxx)	0	16	To use function code 15 to write 1~128 coil data into a certain Modbus slave station
160	write 136 bits(0xxxx)	0	17	To use function code 15 to write 1~136 coil data into a certain Modbus slave station
161	write 144 bits(0xxxx)	0	18	To use function code 15 to write 1~144 coil data into a certain Modbus slave station
162	write 152 bits(0xxxx)	0	19	To use function code 15 to write 1~152 coil data into a certain Modbus slave station
163	write 160 bits(0xxxx)	0	20	To use function code 15 to write 1~160 coil data into a certain Modbus slave station
164	write 168 bits(0xxxx)	0	21	To use function code 15 to write 1~168 coil data into a certain Modbus slave station
165	write 176 bits(0xxxx)	0	22	To use function code 15 to write 1~176 coil data into

Module no.	Module name	Input data length (byte)	Output data length (byte)	Description
				a certain Modbus slave station
166	write 184 bits(0xxxx)	0	23	To use function code 15 to write 1~184 coil data into a certain Modbus slave station
167	write 192 bits(0xxxx)	0	24	To use function code 15 to write 1~192 coil data into a certain Modbus slave station
168	write 200 bits(0xxxx)	0	25	To use function code 15 to write 1~200 coil data into a certain Modbus slave station
169	write 208 bits(0xxxx)	0	26	To use function code 15 to write 1~208 coil data into a certain Modbus slave station
170	write 216 bits(0xxxx)	0	27	To use function code 15 to write 1~216 coil data into a certain Modbus slave station
171	write 224 bits(0xxxx)	0	28	To use function code 15 to write 1~224 coil data into a certain Modbus slave station
172	write 232 bits(0xxxx)	0	29	To use function code 15 to write 1~232 coil data into a certain Modbus slave station
173	write 240 bits(0xxxx)	0	30	To use function code 15 to write 1~240 coil data into a certain Modbus slave station
174	write 248 bits(0xxxx)	0	31	To use function code 15 to write 1~248 coil data into a certain Modbus slave station
175	write 256 bits(0xxxx)	0	32	To use function code 15 to write 1~256 coil data into a certain Modbus slave station
176	write 1 Words(4xxxx)	0	2	使用功能码 16 往某 Modbus 从站写入 1 个寄存器数据 To use function code 16 to write 1 register data into a certain Modbus slave station
177	write 2 Words(4xxxx)	0	4	To use function code 16 to write 2 register data into a certain Modbus slave station
178	write 3 Words(4xxxx)	0	6	To use function code 16 to write 3 register data into a certain Modbus slave station
179	write 4 Words(4xxxx)	0	8	To use function code 16 to write 4 register data into a certain Modbus slave station
180	write 5 Words(4xxxx)	0	10	To use function code 16 to write 5 register data into a certain Modbus slave station
181	write 6 Words(4xxxx)	0	12	To use function code 16 to write 6 register data into a certain Modbus slave station
182	write 7 Words(4xxxx)	0	14	To use function code 16 to write 7 register data into a certain Modbus slave station
183	write 8 Words(4xxxx)	0	16	To use function code 16 to write 8 register data into a certain Modbus slave station
184	write 9 Words(4xxxx)	0	18	To use function code 16 to write 9 register data into a certain Modbus slave station
185	write 10 Words(4xxxx)	0	20	To use function code 16 to write 10 register data into a certain Modbus slave station
186	write 11 Words(4xxxx)	0	22	To use function code 16 to write 11 register data into a certain Modbus slave station
187	write 12 Words(4xxxx)	0	24	To use function code 16 to write 12 register data into a certain Modbus slave station
188	write 13 Words(4xxxx)	0	26	To use function code 16 to write 13 register data into a certain Modbus slave station
189	write 14 Words(4xxxx)	0	28	To use function code 16 to write 14 register data into a certain Modbus slave station
190	write 15 Words(4xxxx)	0	30	To use function code 16 to write 15 register data into a certain Modbus slave station
191	write 16 Words(4xxxx)	0	32	To use function code 16 to write 16 register data into a certain Modbus slave station
192	write 18 Words(4xxxx)	0	36	To use function code 16 to write 18 register data into a certain Modbus slave station
193	write 20 Words(4xxxx)	0	40	To use function code 16 to write 20 register data into a certain Modbus slave station
194	write 22 Words(4xxxx)	0	44	To use function code 16 to write 22 register data into a certain Modbus slave station

Module no.	Module name	Input data length (byte)	Output data length (byte)	Description
195	write 24 Words(4xxxx)	0	48	To use function code 16 to write 24 register data into a certain Modbus slave station
196	write 26 Words(4xxxx)	0	52	To use function code 16 to write 26 register data into a certain Modbus slave station
197	write 28 Words(4xxxx)	0	56	To use function code 16 to write 28 register data into a certain Modbus slave station
198	write 30 Words(4xxxx)	0	60	To use function code 16 to write 30 register data into a certain Modbus slave station
199	write 32 Words(4xxxx)	0	64	To use function code 16 to write 32 register data into a certain Modbus slave station
200	force single bit (05H Command)	0	1	To use function code 5 to write 1 coil data into a certain Modbus slave station
201	set single word (06H Command)	0	2	To use function code 6 to write 1 register data into a certain Modbus slave station
202	8Bits MODBUS Slaves Status	1	0	To read 8 bits Modbus slave station status
203	8Bytes MODBUS Slaves Status	8	0	To read 8 bytes Modbus slave station status
204	16Bits MODBUS Slaves Status	2	0	To read 16 bits Modbus slave station status
205	16Bytes MODBUS Slaves Status	16	0	To read 16 bytes Modbus slave station status
206	24Bits MODBUS Slaves Status	3	0	To read 24 bits Modbus slave station status
207	24Bytes MODBUS Slaves Status	24	0	To read 24 bytes Modbus slave station status
208	32Bits MODBUS Slaves Status	4	0	To read 32 bits Modbus slave station status
209	32Bytes MODBUS Slaves Status	32	0	To read 8 bytes Modbus slave station status

As shown in table above, there are four types of the 209 modules:

- a) Empty module (module 1)
- b) Modbus communication module (module 4-201)
- c) Control module (module 3)
- d) Overall state module (module 2) and detailed state module (202-209)

Slot 1 is fixed as overall state module (module 2), and Slot 2 is fixed as Control module (module 3). Other 37 slots are free for configuration.

Note: if there's detailed state module (module 202-209) requirement, detailed state module can only be put in last valid slot (E.g. Modbus module uses 5 slots, then slot 1 is the overall state module, slot 2 is control module and slot 3-7 is Modbus communication module. Slot 8 is the last valid slot in this example. If detailed state module is required, put it there).

Modbus configuration is realized by user parameters, which are names as **device user parameter**. Besides this 3 modules, all others has user parameter for configuration, which are named as **module user parameter**.

● **Device user parameter**

This part includes Modbus baud rate, checkout information, data update mode, write in mode, master sending interval, interval time and with /without slave state checkout etc.

Table 4 G0306-MS Device User Parameter

No.	Parameter name	Description
1	Baudrate	0:300 bps 1:600 bps 2:1200 bps 3:2400 bps 4:4800 bps

		5:9600 bps 6:19200 bps 7:38400 bps 8:57600 bps
2	Parity	0:8 bit, no check, 1 stop bit (8Bits, No Parity, 1 stop bit) 1:8 bit, even parity check, 1 stop bit (8Bits, Even Parity, 1stop bit) 2:8 bit, odd parity check, 1 stop bit (8Bits, Odd Parity, 1stop bit) 3:8 bit, no check, 2 stop bits (8Bits, No Parity, 2stop bits)
3	MODBUS Slave Monitoring	When this parameter is not 0, detailed state module must be used (202-209) 0: no state monitoring (NoMonitoring) 1:8 bit state monitoring (8BitsMonitoring) 2:8 byte state monitoring (8BytesMonitoring) 3:16 bit state monitoring (16BitsMonitoring) 4:16 byte state monitoring (16BytesMonitoring) 5:24 bit state monitoring (24BitsMonitoring) 6:24 byte state monitoring (24BytesMonitoring) 7:32 bit state monitoring (32BitsMonitoring) 8:32 byte state monitoring (32BytesMonitoring)
4	Data Update Mode	1: after all MD response (All Items End) 2: after each MD response (Each Item End)
5	Writing Mode	0:always write (Write always) 1:write when data changes(Write on change)
6	Master Send Interval	0: slave response send (Salve Response) If slave does not response, response time timeout is fixed as 1s. 1:same interval send (Same Interval) Send interval and response timeout are both set by interval time value.
7	Interval Timer Value	1:10ms 2:20ms 3:30ms 4:40ms 5:50ms 6:60ms 8:80ms 10:100ms 12:120ms 15:150ms 20:200ms 25:250ms 30:300ms 35:350ms 40:400ms 45:450ms 50:500ms 55:550ms 60:600ms 65:650ms 70:700ms 75:750ms 80:800ms 85:850ms 90:900ms 95:950ms 100:1000ms 255: indefinite duration wait-for-response (Waiting...)

● **Module user parameter**

Parameter here are related with actual Modbus slave device, including slave device address, register starting address that need read and write data , Quantity of Outputs etc.

Table 5 G0306-MS Module (4-143、176-199) User Parameter Table

No.	Parameter name	Description
-----	----------------	-------------

1	MODBUS Slave Address	Modbus Slave Address, 0-255。
2	Starting Address	Register starting address that need read and write data

Table 6 G0306-MS Module (144-175) User Parameter Table

No.	Parameter name	Description
1	MODBUS Slave Address	Modbus Slave Address, 0-255。
2	Starting Address	Register starting address that need read and write data
3	Quantity of Outputs	Quantity of Outputs

Table 7 G0306-MS Module 200 User Parameter Table

No.	Parameter name	Description
1	MODBUS Slave Address	Modbus Slave Address, 0-255
2	Output Address	Output address of written data

Table 8 G0306-MS Module 201 User Parameter Table

No.	Parameter name	Description
1	MODBUS Slave Address	Modbus Slave Address, 0-255
2	Register Address	Output address of written data

Note: table 4-7 only list revisable user parameter of these modules, not all. For example, a certain module's Modbus function code, register quantity for read and write data, bytes are not listed here.

Table 9 G0306-MS Detailed State Module (202-203) User Parameter Table

Parameter length	Parameter default	Description
8 bytes	0x01,0x02,0x03,0x04,0x05,0x06,0x07,0x08	Each byte represents a Modbus (to be tested) slave device address.

Table 10 G0306-MS Detailed State Module (204-205) User Parameter Table

Parameter length	Parameter default	Description
16 bytes	0x01,0x02,0x03,0x04,0x05,0x06,0x07,0x08,0x09,0x0a,0x0b,0x0c,0x0d,0x0e,0x0f,0x10	Each byte represents a Modbus (to be tested) slave device address.

Table 11 G0306-MS Detailed State Module (206-207) User Parameter Table

Parameter length	Parameter default	Description
24 bytes	0x01,0x02,0x03,0x04,0x05,0x06,0x07,0x08,0x09,0x0a,0x0b,0x0c,0x0d,0x0e,0x0f,0x10,0x11,0x12,0x13,0x14,0x15,0x16,0x17,0x18	Each byte represents a Modbus (to be tested) slave device address.

Table 12 G0306-MS Detailed State Module (208-209) User Parameter Table

Parameter length	Parameter default	Description
32 bytes	0x01,0x02,0x03,0x04,0x05,0x06,0x07,0x08,0x09,0x0a,0x0b,0x0c,0x0d,0x0e,0x0f,0x10,0x11,0x12,0x13,0x14,0x15,0x16,0x17,0x18,0x19,0x1a,0x1b,0x1c,0x1d,0x1e,0x1f,0x20	Each byte represents a Modbus (to be tested) slave device address.

(2) G0306-S GSD file specification

GSD file name for G0306-SS is MCYB0F19.GSE.

This GSD file contains 20 slots, 67 modules and it supports at most 237 userspecification.

● **Module description**

Table 13 G0306-SS GSD module description

No.	Module name	Input data length(bytes)	output data length(bytes)	Description
1	empty	0	0	Empty module
2	status	1	0	Modbus communication state module
3	control	0	1	Modbuscommunication control module
4	Input:8 bits(0xxxx)	1	0	Make 1 byte input data map to Modbus 0xxxx storage area in order
5	Input:16 bits(0xxxx)	2	0	Make 2 byte input data map to Modbus 0xxxx storage area in order
6	Input:24 bits(0xxxx)	3	0	Make 3 byte input data map to Modbus 0xxxx storage area in order
7	Input:32 bits(0xxxx)	4	0	Make 4 byte input data map to Modbus 0xxxx storage area in order
8	Input:40 bits(0xxxx)	5	0	Make 5 byte input data map to Modbus 0xxxx storage area in order
9	Input:48 bits(0xxxx)	6	0	Make 6 byte input data map to Modbus 0xxxx storage area in order
10	Input:56 bits(0xxxx)	7	0	Make 7 byte input data map to Modbus 0xxxx storage area in order
11	Input:64 bits(0xxxx)	8	0	Make 8 byte input data map to Modbus 0xxxx storage area in order
12	Input:72 bits(0xxxx)	9	0	Make 9 byte input data map to Modbus 0xxxx storage area in order
13	Input:80 bits(0xxxx)	10	0	Make 10 byte input data map to Modbus 0xxxx storage area in order
14	Input:88 bits(0xxxx)	11	0	Make 11 byte input data map to Modbus 0xxxx storage area in order
15	Input:96 bits(0xxxx)	12	0	Make 12 byte input data map to Modbus 0xxxx storage area in order
16	Input:104 bits(0xxxx)	13	0	Make 13 byte input data map to Modbus 0xxxx storage area in order
17	Input:112 bits(0xxxx)	14	0	Make 14 byte input data map to Modbus 0xxxx storage area in order
18	Input:120 bits(0xxxx)	15	0	Make 15 byte input data map to Modbus 0xxxx storage area in order
19	Input:128 bits(0xxxx)	16	0	Make 16 byte input data map to Modbus 0xxxx storage area in order
20	Input:1 Word(4xxxx)	2	0	Make 2 byte input data map to Modbus 4xxxx storage area in order
21	Input:2 Words(4xxxx)	4	0	Make 4 byte input data map to Modbus 4xxxx storage area in order
22	Input:3 Words(4xxxx)	6	0	Make 6 byte input data map to Modbus 4xxxx storage area in order
23	Input:4 Words(4xxxx)	8	0	Make 8 byte input data map to Modbus 4xxxx storage area in order
24	Input:5 Words(4xxxx)	10	0	Make 10 byte input data map to Modbus 4xxxx storage area in order
25	Input:6 Words(4xxxx)	12	0	Make 12 byte input data map to Modbus 4xxxx storage area in order
26	Input:7 Words(4xxxx)	14	0	Make 14 byte input data map to Modbus 4xxxx storage area in order
27	Input:8 Words(4xxxx)	16	0	Make 16 byte input data map to Modbus 4xxxx storage area in order

No.	Module name	Input data length(bytes)	output data length(bytes)	Description
	Words(4xxxx)			4xxxx storage area in order
28	Input:9 Words(4xxxx)	18	0	Make 18 byte input data map to Modbus 4xxxx storage area in order
29	Input:10 Words(4xxxx)	20	0	Make 20 byte input data map to Modbus 4xxxx storage area in order
30	Input:11 Words(4xxxx)	22	0	Make 22 byte input data map to Modbus 4xxxx storage area in order
31	Input:12 Words(4xxxx)	24	0	Make 24 byte input data map to Modbus 4xxxx storage area in order
32	Input:13 Words(4xxxx)	26	0	Make 26 byte input data map to Modbus 4xxxx storage area in order
33	Input:14 Words(4xxxx)	28	0	Make 28 byte input data map to Modbus 4xxxx storage area in order
34	Input:15 Words(4xxxx)	30	0	Make 30 byte input data map to Modbus 4xxxx storage area in order
35	Input:16 Words(4xxxx)	32	0	Make 32 byte input data map to Modbus 4xxxx storage area in order
36	Output:8 bits(1xxxx)	0	1	Make 1 byte output data map to Modbus 1xxxx storage area in order
37	Output:16 bits(1xxxx)	0	2	Make 2 byte output data map to Modbus 1xxxx storage area in order
38	Output:24 bits(1xxxx)	0	3	Make 3 byte output data map to Modbus 1xxxx storage area in order
39	Output:32 bits(1xxxx)	0	4	Make 4 byte output data map to Modbus 1xxxx storage area in order
40	Output:40 bits(1xxxx)	0	5	Make 5 byte output data map to Modbus 1xxxx storage area in order
41	Output:48 bits(1xxxx)	0	6	Make 6 byte output data map to Modbus 1xxxx storage area in order
42	Output:56 bits(1xxxx)	0	7	Make 7 byte output data map to Modbus 1xxxx storage area in order
43	Output:64 bits(1xxxx)	0	8	Make 8 byte output data map to Modbus 1xxxx storage area in order
44	Output:72 bits(1xxxx)	0	9	Make 9 byte output data map to Modbus 1xxxx storage area in order
45	Output:80 bits(1xxxx)	0	10	Make 10 byte output data map to Modbus 1xxxx storage area in order
46	Output:88 bits(1xxxx)	0	11	Make 11 byte output data map to Modbus 1xxxx storage area in order
47	Output:96 bits(1xxxx)	0	12	Make 12 byte output data map to Modbus 1xxxx storage area in order
48	Output:104 bits(1xxxx)	0	13	Make 13 byte output data map to Modbus 1xxxx storage area in order
49	Output:112 bits(1xxxx)	0	14	Make 14 byte output data map to Modbus 1xxxx storage area in order
50	Output:120 bits(1xxxx)	0	15	Make 15 byte output data map to Modbus 1xxxx storage area in order
51	Output:128 bits(1xxxx)	0	16	Make 16 byte output data map to Modbus 1xxxx storage area in order
52	Output:1 Word(3xxxx)	0	2	Make 2 byte output data map to Modbus 3xxxx storage area in order
53	Output:2 Words(3xxxx)	0	4	Make 4 byte output data map to Modbus 3xxxx storage area in order

No.	Module name	Input data length(bytes)	output data length(bytes)	Description
54	Output:3 Words(3xxxx)	0	6	Make 6 byte output data map to Modbus 3xxxx storage area in order
55	Output:4 Words(3xxxx)	0	8	Make 8 byte output data map to Modbus 3xxxx storage area in order
56	Output:5 Words(3xxxx)	0	10	Make 10 byte output data map to Modbus 3xxxx storage area in order
57	Output:6 Words(3xxxx)	0	12	Make 12 byte output data map to Modbus 3xxxx storage area in order
58	Output:7 Words(3xxxx)	0	14	Make 14 byte output data map to Modbus 3xxxx storage area in order
59	Output:8 Words(3xxxx)	0	16	Make 16 byte output data map to Modbus 3xxxx storage area in order
60	Output:9 Words(3xxxx)	0	18	Make 18 byte output data map to Modbus 3xxxx storage area in order
61	Output:10 Words(3xxxx)	0	20	Make 20 byte output data map to Modbus 3xxxx storage area in order
62	Output:11 Words(3xxxx)	0	22	Make 22 byte output data map to Modbus 3xxxx storage area in order
63	Output:12 Words(3xxxx)	0	24	Make 24 byte output data map to Modbus 3xxxx storage area in order
64	Output:13 Words(3xxxx)	0	26	Make 26 byte output data map to Modbus 3xxxx storage area in order
65	Output:14 Words(3xxxx)	0	28	Make 28 byte output data map to Modbus 3xxxx storage area in order
66	Output:15 Words(3xxxx)	0	30	Make 30 byte output data map to Modbus 3xxxx storage area in order
67	Output:16 Words(3xxxx)	0	32	Make 32 byte output data map to Modbus 3xxxx storage area in order

As shown in table above, the 67 modules can be divided into 4 kinds:

- a) Empty module (module 1)
- b) Overall status module (module 2)
- c) Control module (module 3)
- d) Modbus mapping module (module 4-67) . Among them, slot 1 is fixed as overall status module (module 2), slot 2 is fixed as control module (module 3) and the rest 18 slots can be set freely based on requirements.

Modbus communication configuration is realized by user parameter, which is named **device user parameter**. Besides the first three modules, all other modules have user parameter for configuration, which is named **module user parameter**.

● **Device user parameter**

This part contains Modbus communication baud rate, parity message and whether it has Modbus slave status inspection etc.

Table 14 G0306-SS device user parameter table

Item	Parameter	Description
1	Baudrate	3:2400 bps 4:4800 bps 5:9600 bps

		6:19200 bps 7:38400 bps 8:57600 bps
2	Parity	0:8 bit, no parity, 1stop bit(8Bits, No Parity, 1stop bit) 1:8 bit, even parity, 1 stop bit (8Bits, Even Parity, 1stop bit) 2:8 bit, odd parity, 1 stop bit (8Bits, Odd Parity, 1stop bit) 3:8 bit, no parity, 2 stop bit (8Bits, No Parity, 2stop bits)
3	MODBUS Slave Device Address	This is to set address for current gateway serving as Modbus slave. Scope: 1-247.

● **Module user parameter**

The parameter is related with Modbus storage and data length. Parameter value is related with modules, without modification. For example,“Input:24 bits(0xxxx)” module user parameter is 0x00, 0x03, which shows this module is related with Modbus 0storage area, with 3 bytes data.

● **Modbus storage area and Profibus input output data relief area mapping relation**

Table 15 Modbus storage area and Profibus input output data relief area mapping relation

Module	Corresponding Modbus storage area	input data length	output max	Storage unit address scope
Input:8 bits(0xxxx) ~ Input:128 bits(0xxxx)	Coil 0xxxx	244 bytes=1952bit		0~1951
Output:8 bits(1xxxx) ~ Output:128 bits(1xxxx)	Discrete magnitude input 1xxxx	244 =1952bit	bytes	0~1951
Input:1 Word(4xxxx) ~ Input:16 Words(4xxxx)	Holding register 4xxxx	244 =122word	bytes	0~121
Output:1 Word(3xxxx) ~ Output:16 Words(3xxxx)	Input register 3xxxx	244 =122word	bytes	0~121

4.3.2 Installation of GSD

Take Siemens STEP 7 Software, G0306-MS as an example, choose any project, open hardware configuration, choose “Options Install GSD File...”, and it will open the GSD file window.

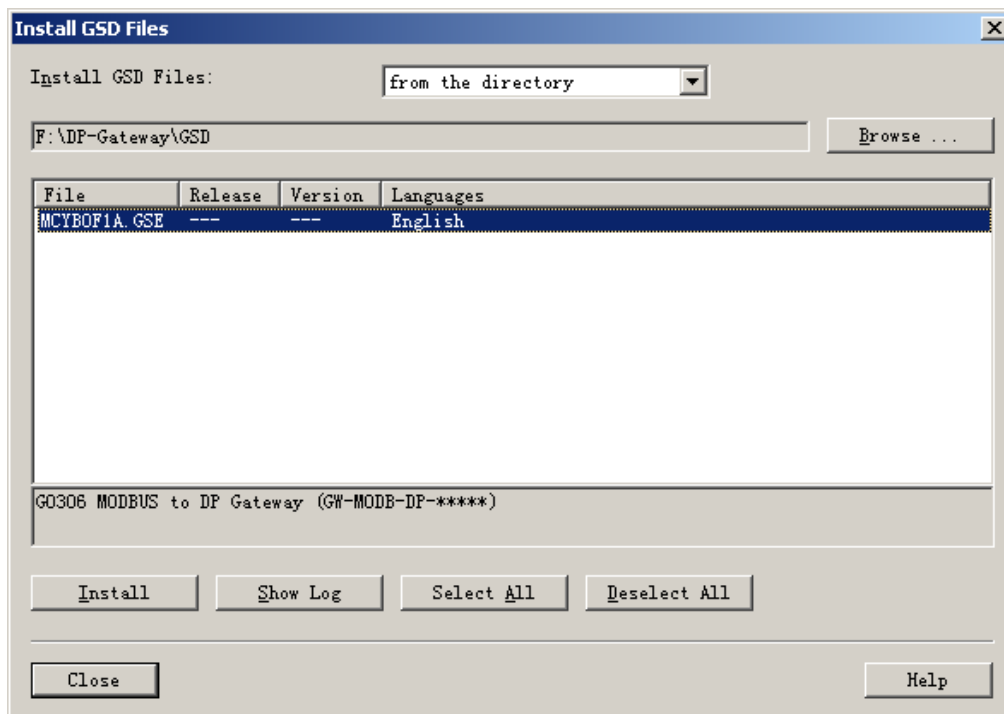


Figure 9 GSD File Window

Click “Browse...” and choose the path for GSD file. It will list all the GSD files in the present path, choose the GSD file and click “Install”. Keep clicking “Yes”, until Figure 10 is shown.

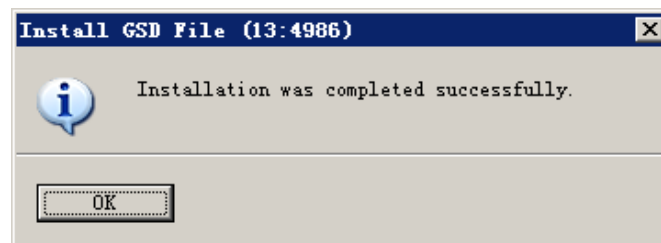


Figure 10 Successful Installation

G0306-SS GSD file uses the same lead-in method.

4.3.3 Use GSD file

After successful installation for GSD, the gateway shall appear in the tree list at the right side of the hardware configuration window.

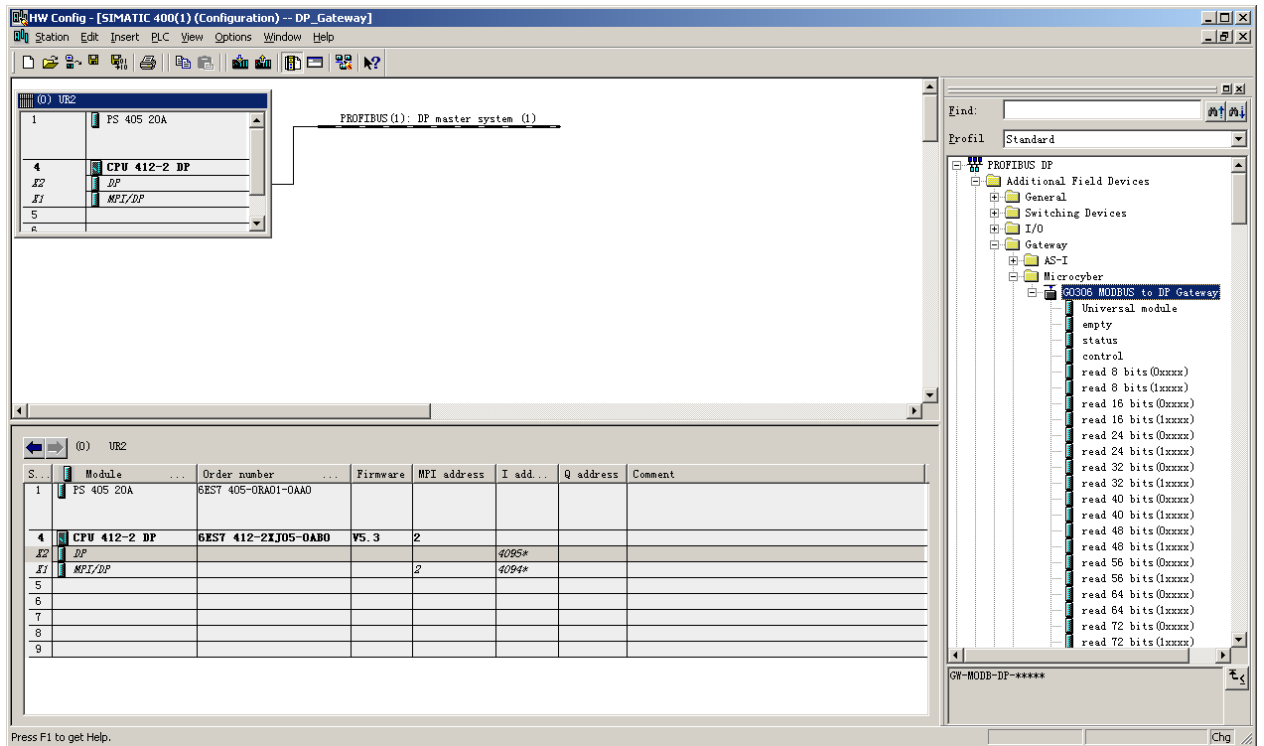


Figure 11 Correctly Installed Devices

Drag gateway to DP bus, and it will show the properties window automatically. Here shall the user configure the requested address, and we choose address 10.

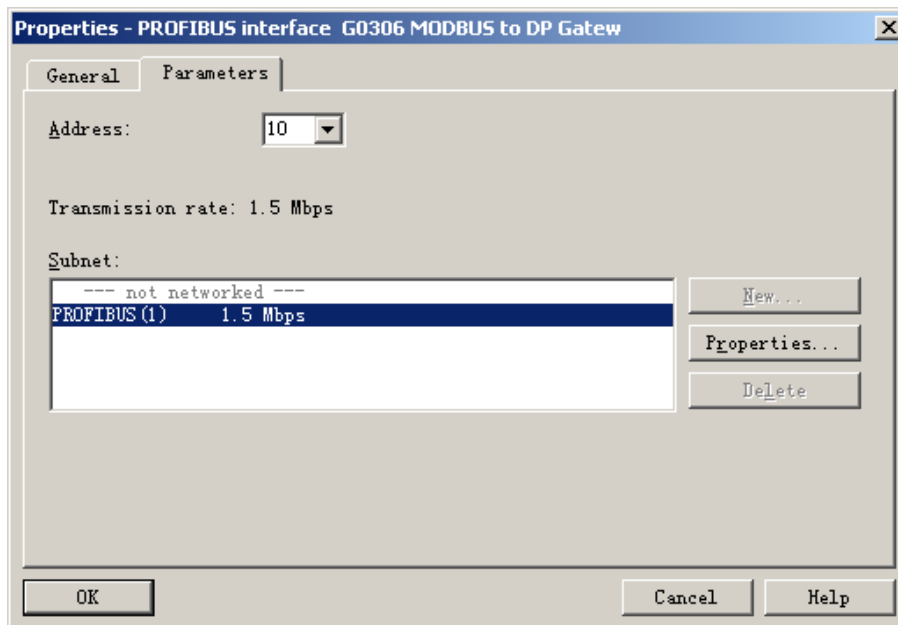


Figure 12 Device property configuration

Click "OK" to finish adding gateway.

Choose the gateway in the configuration image, the device's configuration shall be shown in the left bottom side of the window, shown as following.

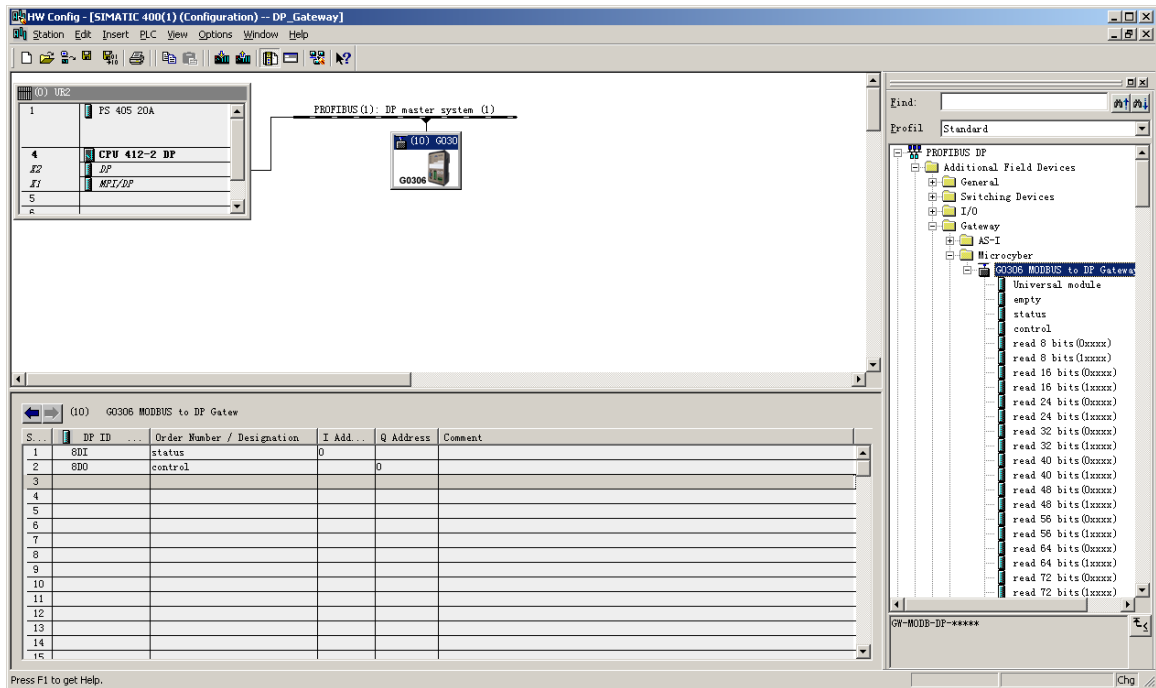


Figure 13 Device Configuration

In the hardware configuration, the configuration shall do related modify according to specific request, in order to form configuration information of gateway's input output data with Modbus data.

G0306-SS GSD file uses the same lead-in method.

The following is an example for gateway usage instruction.

(1) How to use G0306-MS GSD file

● Configuration of device user parameter

As shown in Figure 14, right-click of gateway device and choose Device-specific parameters.

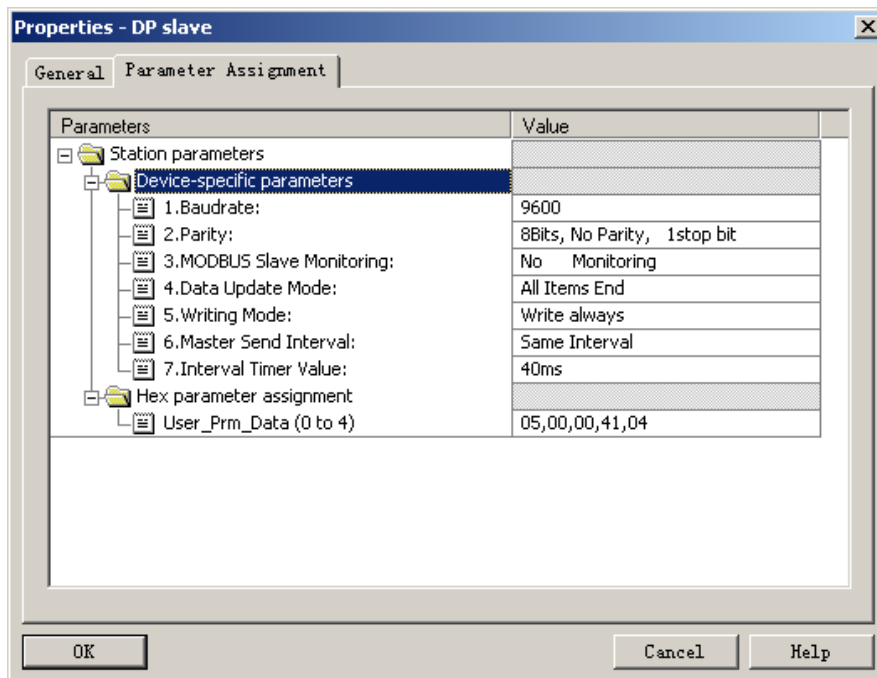


Figure 14 G0306-MS Configuration of Device User Parameter

Here all parameters mentioned in table 4 can be revised. User should do it according to actual situation. For example, time interval value is related with baudrate, slave response time, quantity of device. Improper configuration will lead to no response or error response from slave.

● **Configuration gateway module instruction**

As mentioned in 4.3.1(1), this gateway GSD includes 39 slots, 209 modules and support 237 user parameter at most. Please refer to Table 4. for each module's illustration.

Slot 1 is fixed as overall state module (module 2), slot 2 is fixed as control module (module 3) and the rest 37 slots can be configured by users.

For example, configuration of "read 24 bits(0xxx)" module (module 8) putting into slot 3: select slot 3, and in the right device lists double click "read 24 bits(0xxx)" to add it into slot 3. There are also user parameter for configuration, and the methods are as below.

This gateway forms Modbus message list based on actual configured module order. Following content will introduce how to use each module.

● **Overall state module (module 2)**

This module shows each Modbus message actual state on the basis of Modbus message list.

Table 16 Overall Module Format

B7: odd-even check	B6: CRC check	B5: response timeout	B4-B1: exceptional response code	B0: send/receive
0: current slave odd-even check correct	0: current slave CRC correct	0: current slave response no timeout	Refer to appendix A.3	0: send
1: current slave odd-even check wrong	1: current slave CRC wrong	1: current slave response timeout		1: receive

a) **B0: Send /receive**

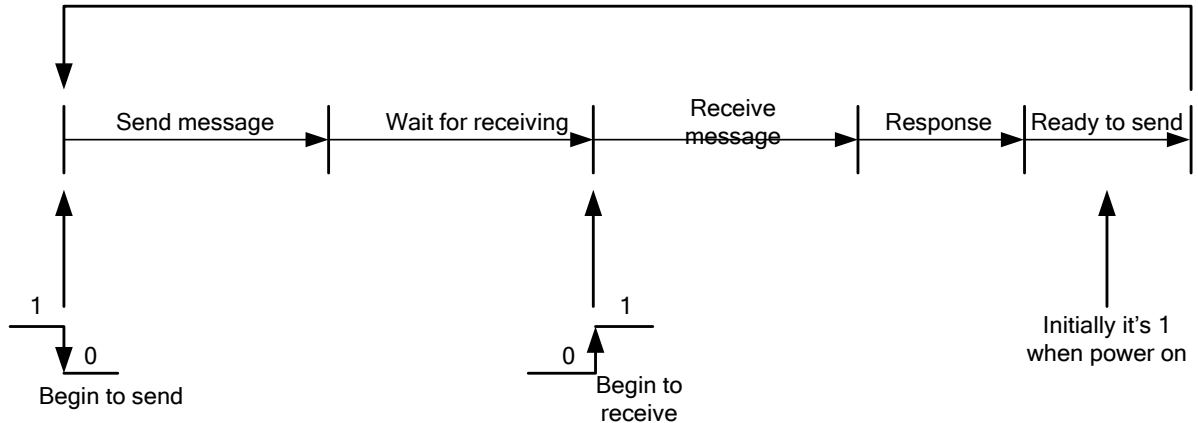


Figure 15 Send Receive State Exchange Diagram

As shown in figure above, after power on, it's on state 1. As Modbus message list runs normally, it will change as figure above. When sending, it's 0. When receiving, it's 1.

b) **B4-B1: Unexceptional response code**

The 4 bits are to show current Modbus message unexceptional response code. Please refer to appendix A.3 for details.

Note: there's a special usage for the 4 bits, that is if slave command configured by a certain slot is not configured to check it in detailed state module (202-209), then it will set unexceptional response code as F.

c) **B5: Response timeout**

This means to follow the setting of interval parameter and interval time value parameter sent by device user parameter master. If user device does not have timeput response, then it's on 1. Modbus message list pointer points to next Modbus message.

d) B6: CRC check

When gateway receives a MODBUS response message and there's mistake on CRC check, it's 1. At this time, the gateway considers MODBUS response data not reliable and performs no exchange with PROFIBUS corresponding data.

e) B7: Even-odd check

When gateway receives data and finds even-odd check wrong, it's 1. At this time, the gateway considers MODBUS response data not reliable and performs no exchange with PROFIBUS corresponding data.

● **Control Module (module 3)**

This module is used for dispatching Modbus message. User can start or stop Modbus scan by this module, also the adjustment of write only or read only or skipping current Modbus message etc.

Table 17 Control Module Format

B7: force reset	B6:stop waiting	B5:error checking	B4-B3:retain	B2:write command	B1:read command	B0: stop/start
0: normal execution	0: normal execution	0: enable error check	——	0: permit writing	0: permit reading	0: start Modbus scan
1:reset	1:skip waiting	1: forbid error check	——	1: forid writing	1:forid reading	1: stop Modbus scan

f) B0: stop/start

In default, when start, it scans Modbus message list. User can set it as 1, that is to stop Modbus message scan.

g) B1: read command

In default, it allows gateway to send Modbus read command. User can set it as 1, that is to stop sending Modbus read command (01H、02H、03H、04H command) .

h) B2: write command

In default, it allows gateway to send Modbus write command. User can set it as 1, that is to stop sending Modbus write command (05H、06H、0FH、10H command) .

i) B5: error check

In default, it enables error check. User can set it as 1, that is to stop error check, which can be used to clear previous wrong information.

j) B6: stop waiting

In device user parameter, when master sending interval parameter is set as same time interval sending and the value is non-terminable waiting for response, this configuration is valid. User can set it as 1 to jump waiting. Then Modbus message list will scan next Modbus message.

k) B7: enforcement restoration

To set it can enforce to reset Modbus message list to first Modbus message.

● **Example: Read xxxmodule (module 4-67)**

these modules can use function code 1 (or 2) to read any bit coil data.

Take "read 24 bits(0xxxx)" module as an example, it uses function code 1 (or 2) to read any 24 bit coil data.

a) Add “read 24 bits(0xxxx)” module, shown as Figure 16:

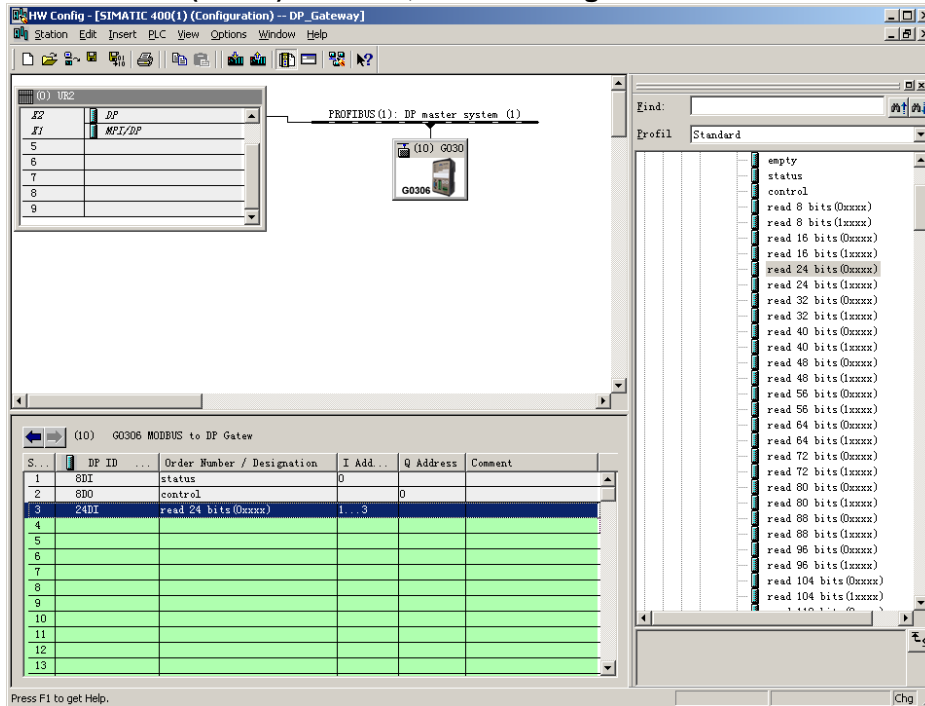


Figure 16 Add“read 24 bits(0xxxx)”Module

For example, to put this module into slot 3. Select slot 3, double click “read 24 bits(0xxxx)”module. IB1...3is Profibus input data address distributed by master, corresponding with Modbus 24bits coil (0xxxx) data.

b) Configuration of “read 24 bits(0xxxx)” module user arameter, shown as Figure 17:

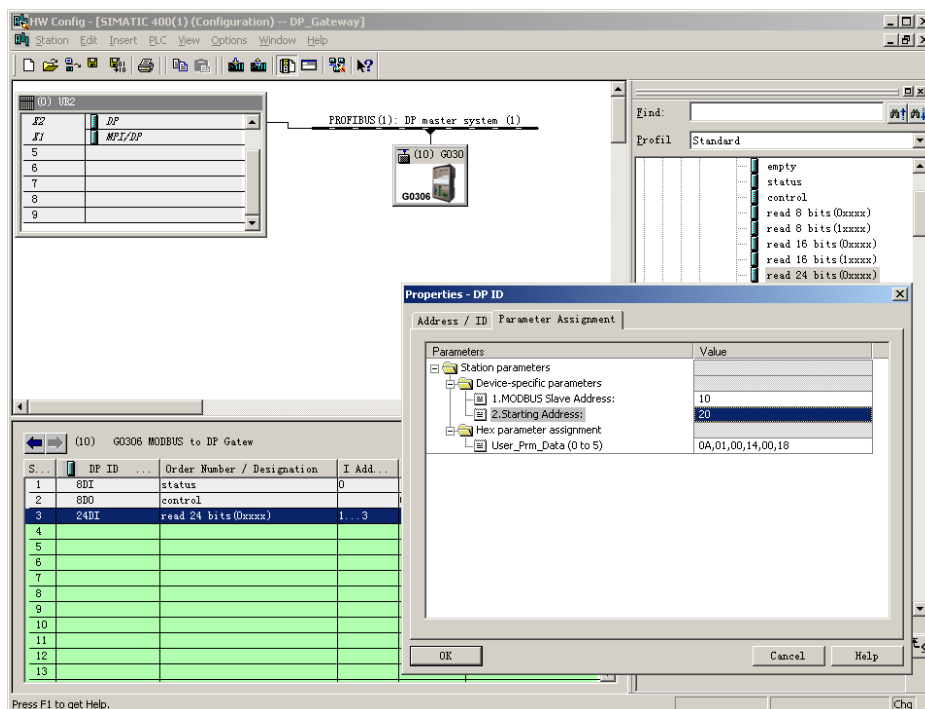


Figure 17 Configuration of“read 24 bits(0xxxx)” Module User Parameter

Double click slot 3“24 DI”or“read 24 bits(0xxxx)”or“1...3” ; choose“Parameter Assigement”to finish the setting of MODBUS Slave Address and Starting Address.

Slave Address: address sent from this Modbus communication module to Modbus slave, corresponded with first byte of MODBUS message.

Starting Address: 0xxxx starting address to read. Note: message coil starting address 00000 corresponds with device 00001 address. Other will be put off by turn.

“1.Modbus Slave Address:”⇒ type MODBUS slave address 10, as shown in Figure 17

“2.Starting Address:”⇒ type will-read coil 0xxxx starting address 00021, set the address as 20⇒“OK”, shown as Figure 17.

c) Corresponding relation of PROFIBUS address and Modbus address

As shown in Figure 18.IB3 are input data address for this Modbus module that distributed by PROFIBUS master, corresponded with 24 bits (0xxxx) read by this MODBUSmessage.

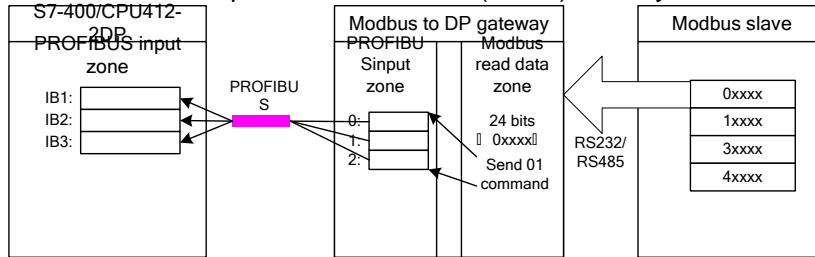


Figure 18 Corresponding Relation of PROFIBUS Address and Modbus Address

● **Example: Read xxx module (module 68-143)**

These modules can use function code 3 (or 4) to read any character register data.

Take“read 4 Words(3xxxx)” module as an example, this module use function code 3(or 4) to read 4 characters register data.

a) Add “read 4 Words(3xxxx)” module, as shown in Figure 19:

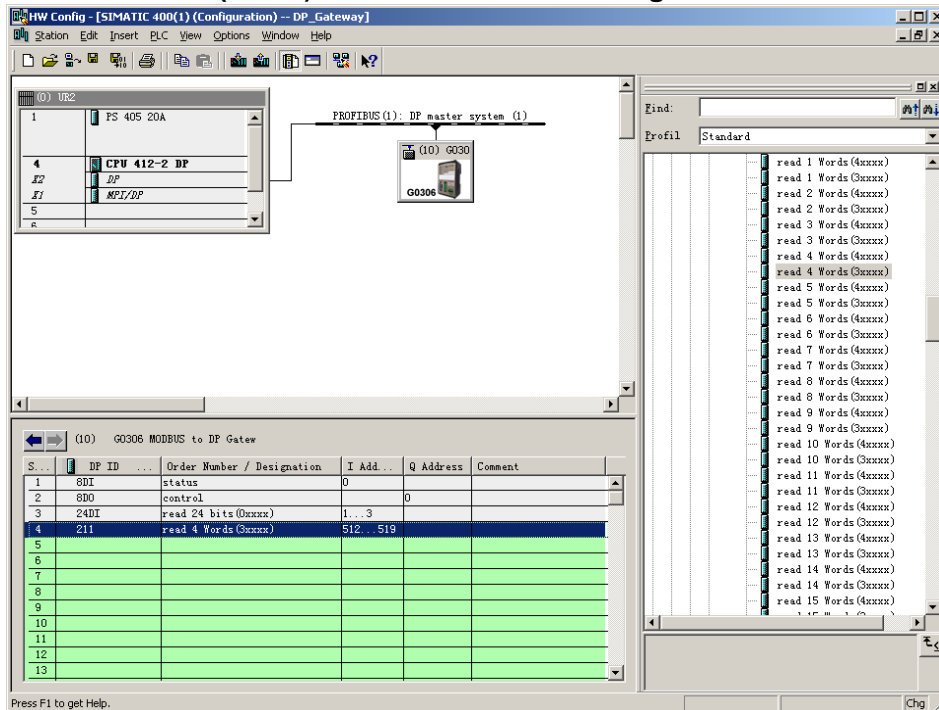


Figure 19 Add“read 4 Words(3xxxx)”Module

For example, to put this module into slot 4: select slot 4 and double click“read 4 Words(3xxxx)” module. IB512...519 is input data address for gateway distributed by Profibus master, corresponded with Modbus 4 characters register data.

b) Configuration of “read 4 Words(3xxxx)”module user parameter, as shown in Figure 20

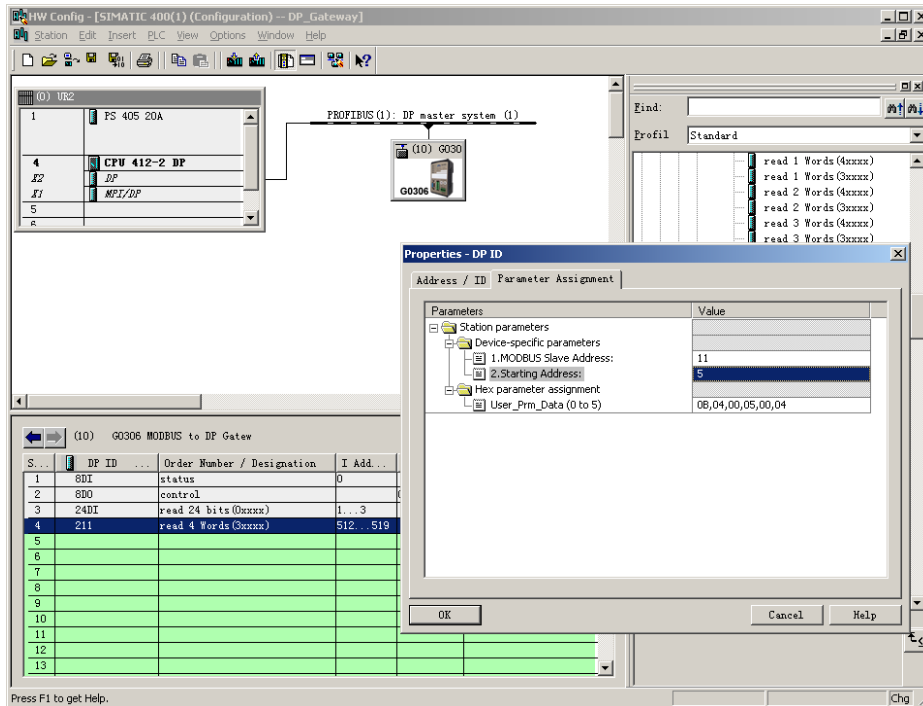


Figure 20 Configuration of “read 4 Words(3xxxx)”Module User Parameter

Double click “211” or “read 4 Words(3xxxx)” or “512...519” in slot 4 and choose “Parameter Assignment”, to finish MODBUS Slave Address and Starting Address parameter setting.

Slave Address: Address sent from this Modbus communication module to Modbus slave, corresponded with this MODBUS message’s first byte.

Starting Address: 3xxxx starting address to read. Note: in message, register starting address 30000 correspond with device 30001 address. The others are put off by turn.

“1. MODBUS Slave Address:” ⇒ type MODBUS slave address 11, as shown in Figure 20

“2. Starting Address:” ⇒ type will-read register 3xxxx’s starting address 30006 and set address as 5 ⇒ “OK”, shown in Figure 20.

c) Corresponding relation of PROFIBUS address and Modbus address

As shown in Figure 21, IB512...IB519 is input data address for this module distributed by PROFIBUS master, corresponded with this MODBUS message 4 Words (3xxxx).

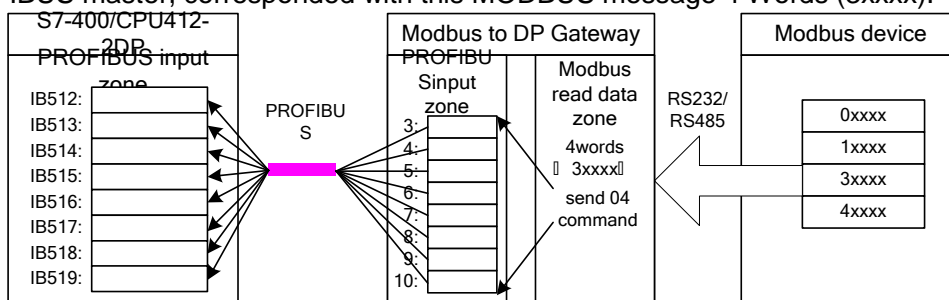


Figure 21 Corresponding Relation of PROFIBUS Address and Modbus Address

● Example: Use Write xxx Bits Module (Module 144-175)

These modules can use function code 15 to write data into any bit coil.

e.g., “write 16 bits(0xxxx)” module uses function code 15 to write data into 16 bits coil.

a) Add “write 16 bits(0xxxx)” module, shown in Figure22:

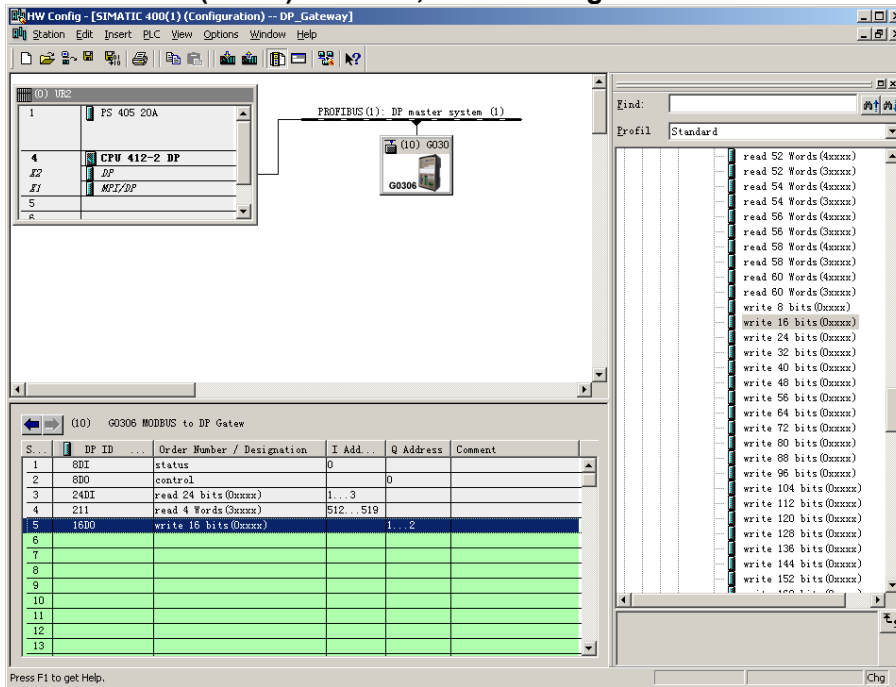


Figure 22 Add “write 16 bits(0xxxx)” Module

e.g., put the module in slot 5, select slot 5, and double-click on "write 16 bits(0xxxx)" module. QB1...2 is output data addresses of the gateway assigned by Profibus master station, corresponding to 16 bits (0xxxx) data written by Modbus.

b) Configure user parameters of “write 16 bits(0xxxx)” module, shown in Figure 23:

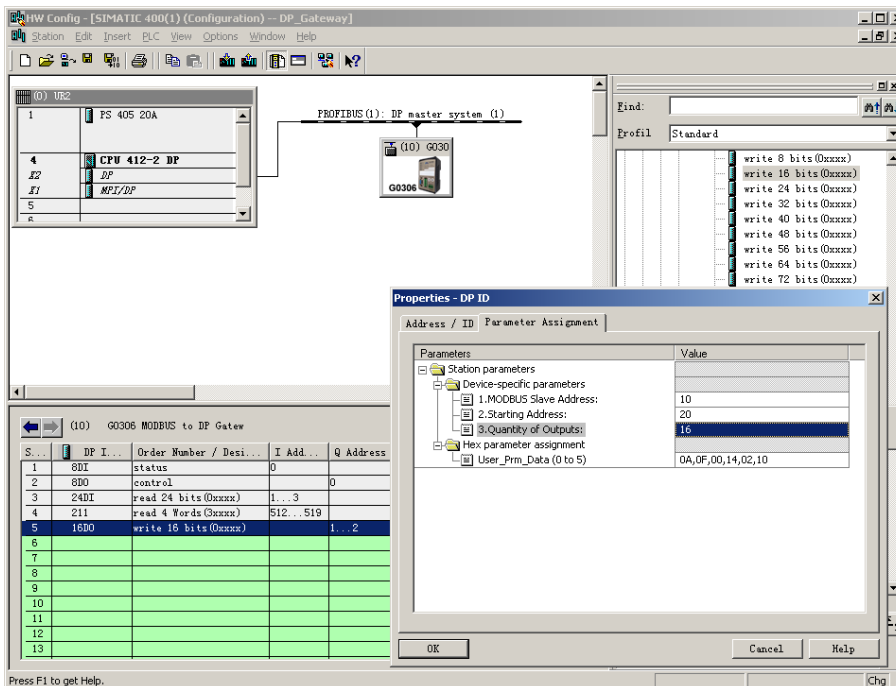


Figure 23 Configure User Parameters of “write 16 bits(0xxxx)” Module

Double-click on "16DO" or " write 16 bits(0xxxx)" or "1...2" in slot 5; Select "Parameter Assignment", complete parameter settings of slave station address (MODBUS Slave

Address), starting address (Starting Address) and coil quantities (Quantity of Outputs).

Slave Address: Refer to Modbus slave station's address via which Modbus communication module sends message to Modbus slave station, corresponding to the first byte of Modbus message.

Starting Address: Refer to the starting address of 0xxxx to be written. Note: Register starting address 00000 in message is corresponding to address 00001 in device, others follow.

Quantity of Outputs: Refers to the bit number written into 0xxxx by Modbus message.

"1.MODBUS Slave Address:" ⇒Type MODBUS slave address 10, shown in Figure 23.

"2.Starting Address:" ⇒Type starting address 00021 of coil 0xxxx to be written, set address as 20⇒"OK", shown in Figure 22.

"3.Quantity of Outputs:" ⇒Type coil number 16 to be written⇒"OK", shown in Figure 23.

c) Corresponding relations between PROFIBUS address and Modbus address

As shown in Figure 23, QB1, QB2 is PROFIBUS output address of Modbus module assigned by PROFIBUS master station, total 2 bytes, corresponding to 16 continuous coils of Modbus device written by the Modbus module. 2 bytes (16 bits) value in QB1 and QB2 of PROFIBUS master station is written into 0xxxx data area of Modbus device by the Modbus module. Here starting address is 00020; PROFIBUS QB1, QB2 is written into 00021 ~ 00036 of Modbus device.

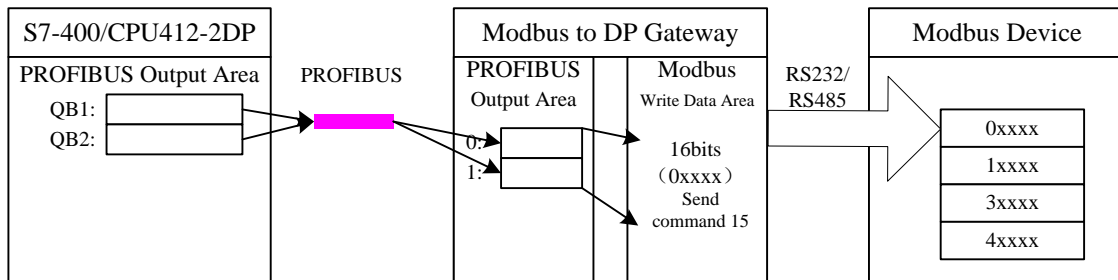


Figure 24 Corresponding Relations between PROFIBUS Address and Modbus Address

● Example: Use Write xxx Bytes Module (Module 176-199)

These modules can use function code 16 to write data into any register.

e.g., "write 4 Words(4xxxx)" module uses function code 16 to write data into 4 registers.

a) Add "write 4 Words(4xxxx)"Module, shown in Figure 25:

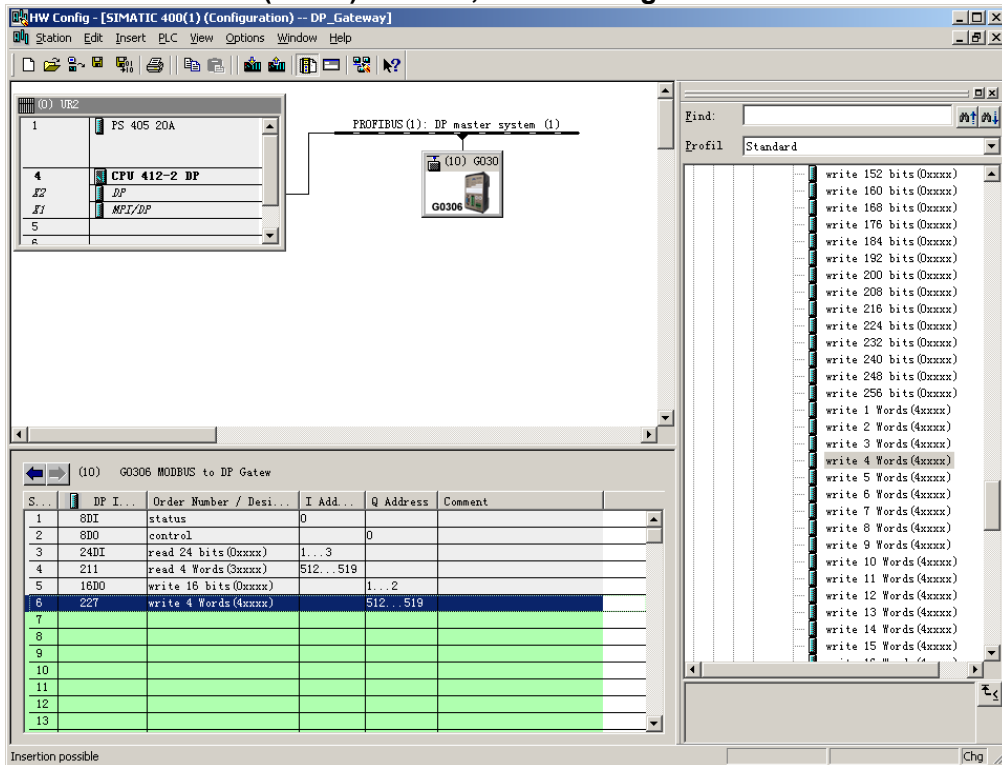


Figure 25 Add "write 4 Words(4xxxx)"Module

e.g., put the module in slot 6, select slot 6, and double-click on " write 4 Words(4xxxx)" module. QB512...519 is output data addresses of the gateway assigned by Profibus master station, corresponding to data of 4-word register (4xxxx) data written by Modbus.

b) Configure user parameters of “write 4 Words(4xxxx)” module, shown in Figure 26:

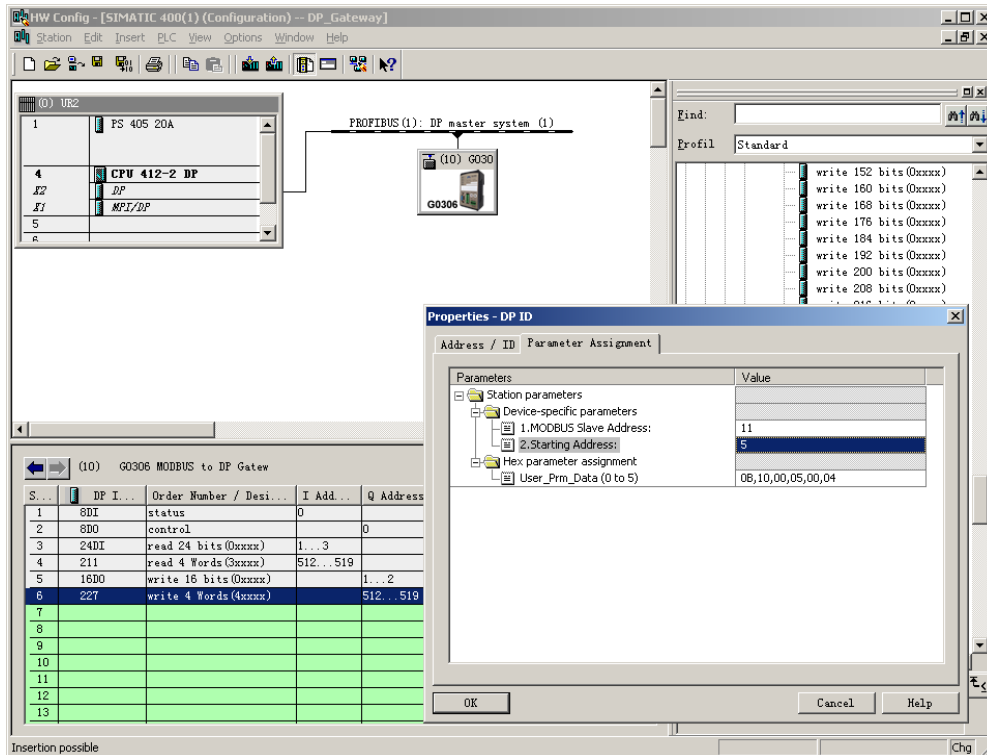


Figure 26 Configure User Parameters of “write 4 Words(4xxxx)” Module

Double-click on "227" or " write 4 Words(4xxxx)" or "512...519" in slot 6; Select "Parameter Assignment", complete parameter settings of slave station address (MODBUS Slave Address) and starting address (Starting Address).

Slave Address: Refer to Modbus slave station’s address via which Modbus communication module sends message to Modbus slave station, corresponding to the first byte of Modbus message.

Starting Address: Refer to the starting address of 4xxxx to be written. Note: Register starting address 400000 in message is corresponding to address 40001 in device, others follow.

"1.MODBUS Slave Address: "⇒Type MODBUS slave address 11, shown in Figure 26.

"2.Starting Address:" ⇒Type starting address 00006 of register 0xxxx to be written, set address as 5⇒"OK", shown in Figure 26.

c) Corresponding relations between PROFIBUS address and Modbus address

As shown in Figure 27, QB512..QB519 is PROFIBUS output address of Modbus module assigned by PROFIBUS master station, total 8 bytes, corresponding to 4 Words (4xxxx) of Modbus device written by the Modbus message.

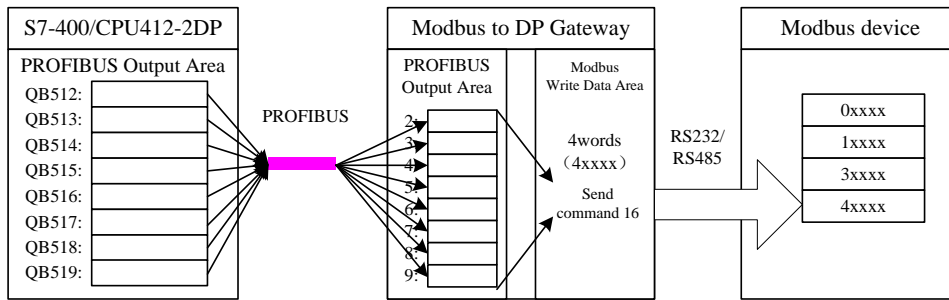


Figure 27 Corresponding Relations between PROFIBUS Address and Modbus address

● **Example: Use Write Single Coil Module (Module 200)**

Module “force single bit (05H Command)” can use function code 5 to write data into some coil.

a) **Add “force single bit (05H Command)”Module, shown in Figure 28:**

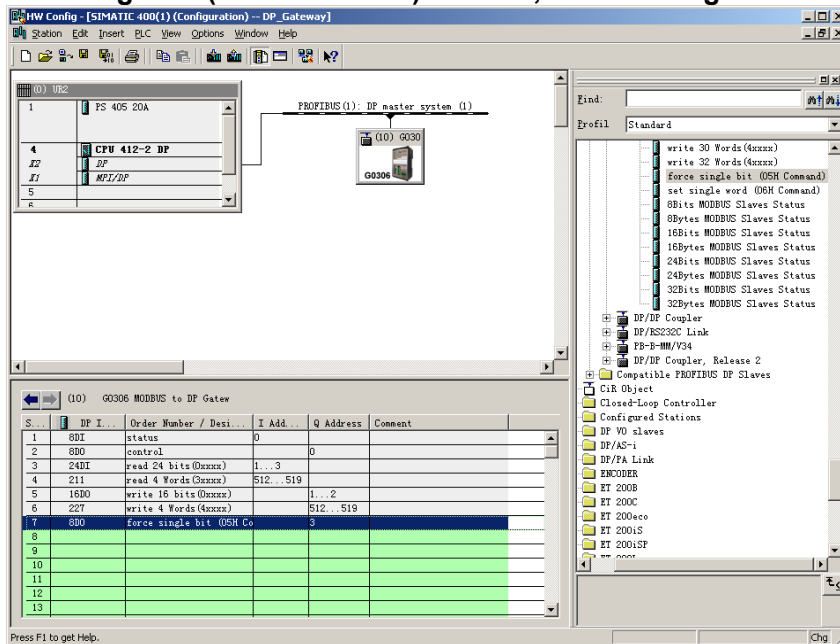


Figure 28 Add “force single bit (05H Command)”Module

e.g., put the module in slot 7, select slot 7, and double-click on " force single bit (05H Command)" module. QB3 is output data address of the gateway assigned by Profibus master station, corresponding to data of 1-bit (0xxxx) data written by Modbus.

b) Configure user parameters of “force single bit (05H Command)” module, shown in Figure 29:

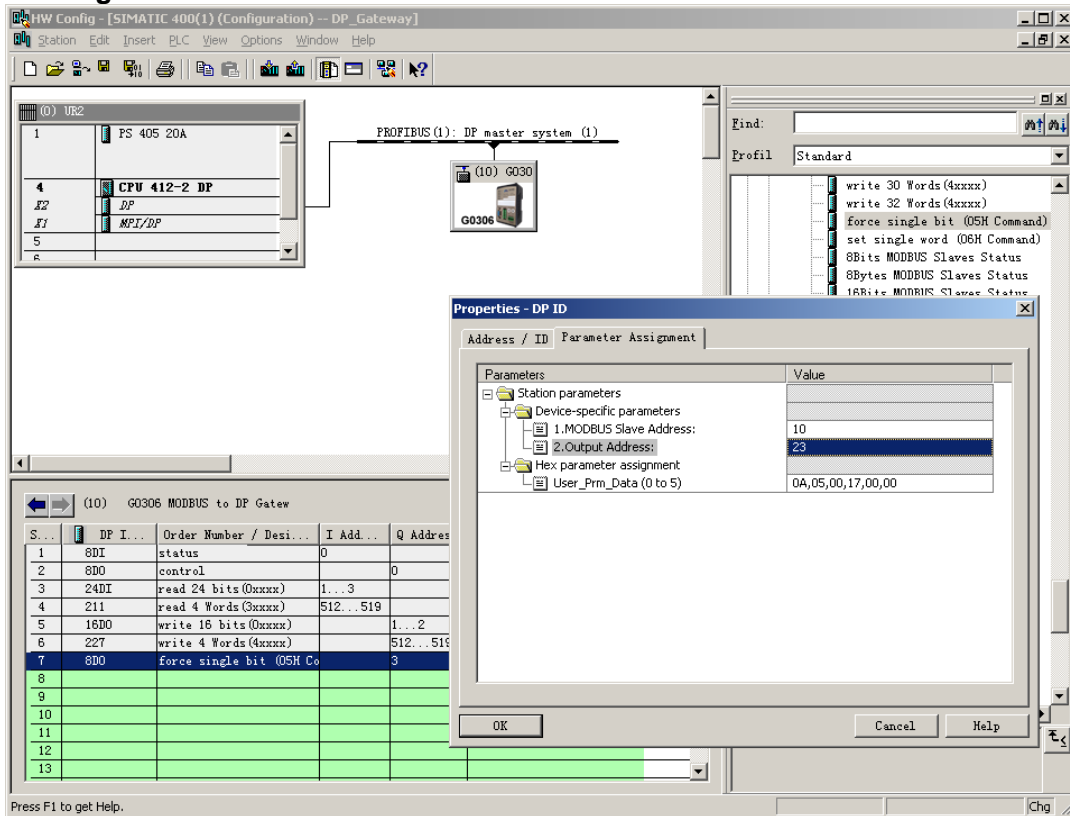


Figure 29 Configure User Parameters of “force single bit (05H Command)” Module

Double-click on "8DO" or "force single bit (05H Command)" or "3" in slot 7; Select "Parameter Assignment", complete parameter settings of slave station address (MODBUS Slave Address) and output address (Output Address).

Slave Address: Refer to Modbus slave station's address via which Modbus communication module sends message to Modbus slave station, corresponding to the first byte of Modbus message.

Output Address: Refer to the output address of 0xxxx to be written. Note: Coil output address 00000 in message is corresponding to address 00001 in device, others follow.

"1.MODBUS Slave Address: "⇒Type MODBUS slave address 10, shown in Figure 29.

"2.Output Address:" ⇒Type output address 00024 of coil 0xxxx to be written, set address as 23⇒"OK", shown in Figure 29.

c) Corresponding Relations between PROFIBUS Address and Modbus Address

As shown in Figure 29, QB3 is PROFIBUS output address of Modbus module assigned by PROFIBUS master station, total 1 byte, corresponding to single coil (0xxxx) of Modbus device written by the Modbus message. The Modbus module sends Modbus command 05 based on QB3 value, set single coil 0xxxx of the Modbus device to 1 or 0. Here single coil output address is 00023, if QB3=0, send command to set single coil 00024 to 0; If QB3≠0, send command to set single coil 00024 to 1.

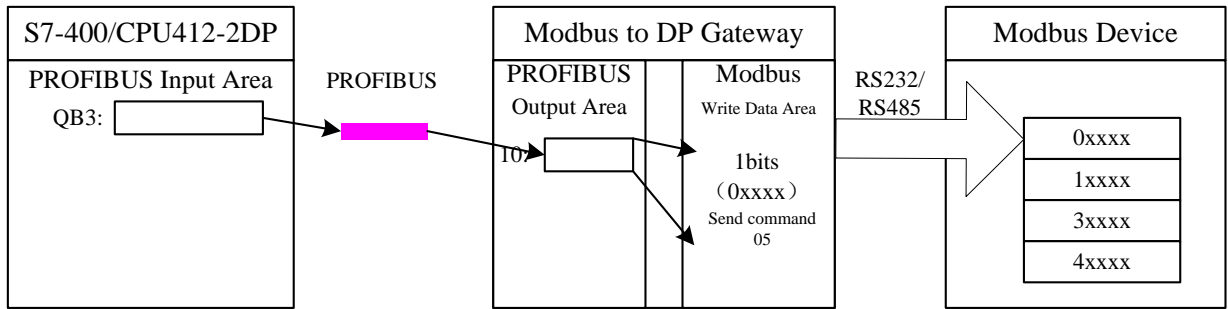


Figure 30 Corresponding Relations between PROFIBUS Address and Modbus Address

● **Example: Use Write Single Register Module (Module 201)**

Module “set single word (06H Command)” can use function code 6 to write data into some register.

a) Add “set single word (06H Command)”Module, shown in Figure 31:

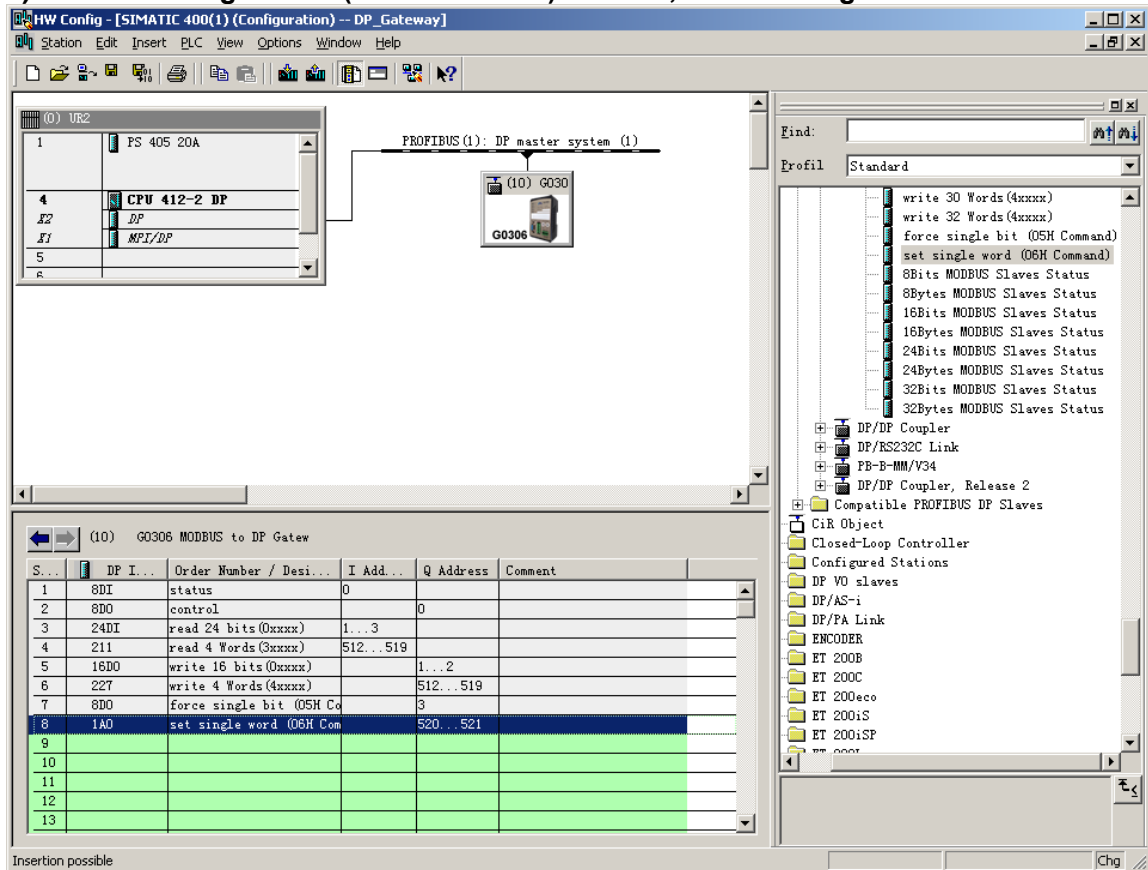


Figure 31 Add “set single word (06H Command)”Module

e.g., put the module in slot 8, select slot 8, and double-click on " set single word (06H Command)" module. QB520...QB523 is output data address of the gateway assigned by Profibus master station, corresponding to data of 1-bit register (4xxxx) written by Modbus.

b) Configure user parameters of “set single word (06H Command)” module, shown in Figure 32:

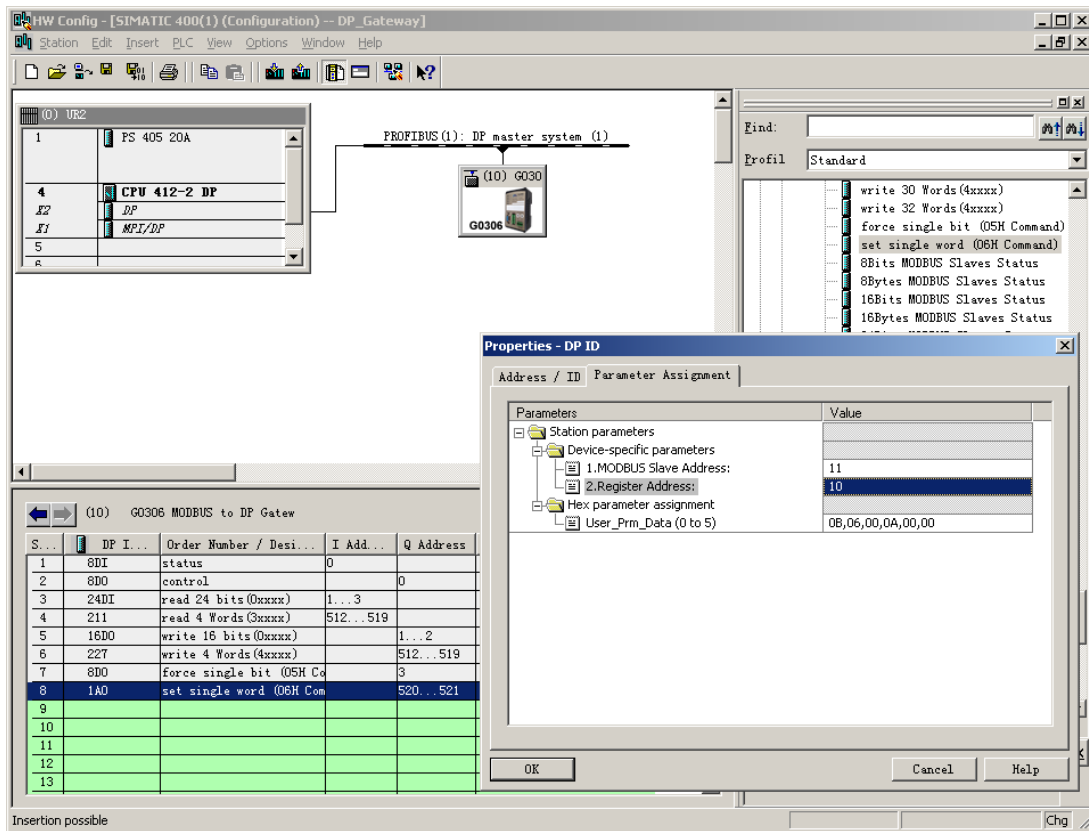


Figure 32 Configure User Parameters of “set single word (06H Command)” Module

Double-click on "1AO " or " set single word (06H Command)" or "520...521" in slot 8; Select "Parameter Assignment", complete parameter settings of slave station address (MODBUS Slave Address) and output address (Register Address).

Slave Address: Refer to Modbus slave station's address via which Modbus communication module sends message to Modbus slave station, corresponding to the first byte of Modbus message.

Register Address: Refer to the register address of 4xxxx to be written. Note: Coil output address 40000 in message is corresponding to address 40001 in device, others follow.

"1.MODBUS Slave Address:" ⇒Type MODBUS slave address 11, shown in Figure 32.

"2. Register Address:" ⇒Type register address 40011 of register 4xxxx to be written, set address as 10⇒"OK", shown in Figure 32.

c) Corresponding Relations between PROFIBUS Address and Modbus Address

As shown in Figure 33, OB520...521 IS PROFIBUS output data address of Modbus module assigned by PROFIBUS master station, total 2 bytes, corresponding to 1 byte register (4xxxx) of Modbus device written by the Modbus message.

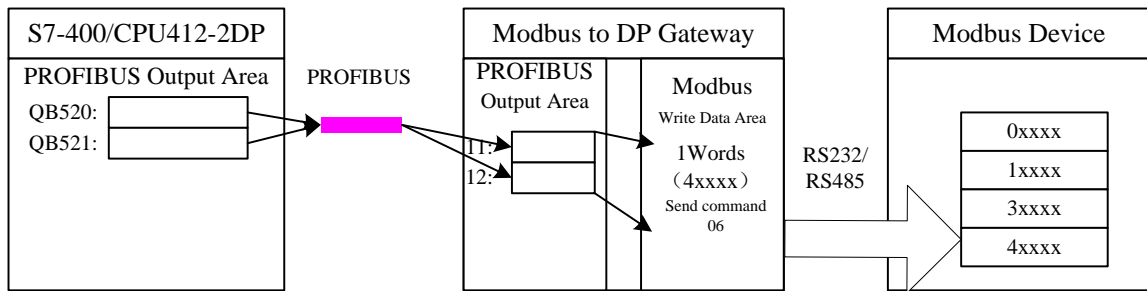


Figure 33 Corresponding Relations between PROFIBUS Address and Modbus Address

- **Example: Use xxx Bits Modbus Slave Monitoring Module (Module 202, 204, 206, 208)**
- a) **Configure user parameters of “3.MODBUS Slave Monitoring” device, shown Figure 34:**

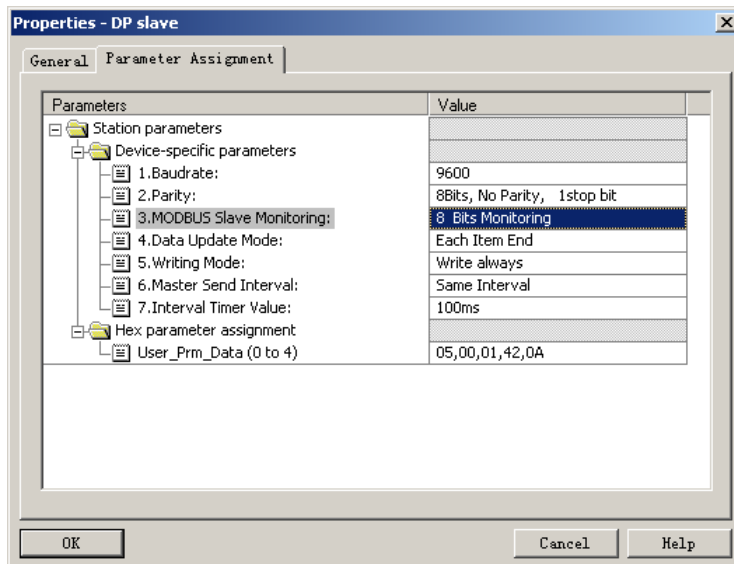


Figure 34 Configure User Parameters of “3.MODBUS Slave Monitoring” Device

As shown in Figure 34, to use xxx bits Modbus slave monitoring module, corresponding Modbus slave monitoring parameters shall be configured in device user parameters. Here to configure "8 Bits Monitoring", corresponding "8Bits MODBUS Slaves Status" module shall be used.

- b) **Add “8Bits MODBUS Slaves Status” Module, shown in Figure 35:**

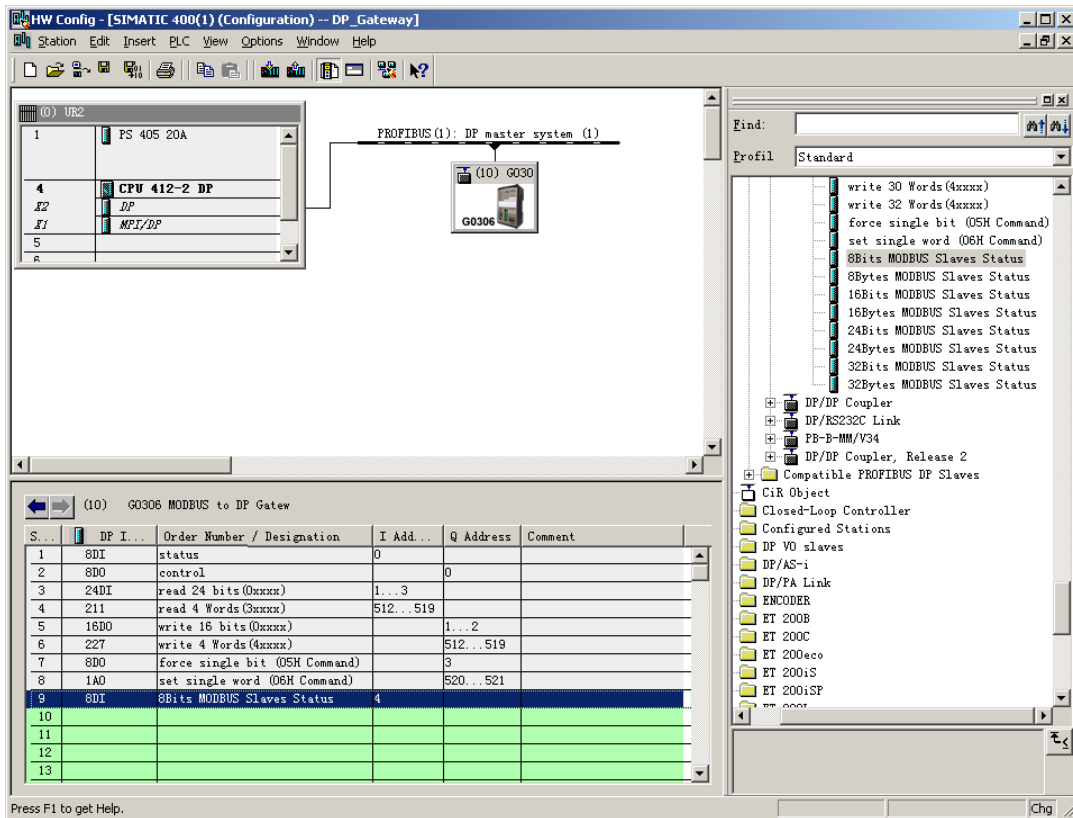


Figure 35 Add "8Bits MODBUS Slaves Status" Module

Previously described, this kind of module must be put after all the Modbus communication modules, so according to previous examples, slot 1-8 already have corresponding modules, then "8Bits MODBUS Slaves Status " module shall be put into slot 9. Select slot 9, double-click "8Bits MODBUS Slaves Status" module. IB4 is input data address of gateway assigned by Profibus master station, total 1 byte, shall be corresponding to Modbus device status to be monitored.

c) Configure user parameters of "8Bits MODBUS Slaves Status" module, shown in Figure 36:

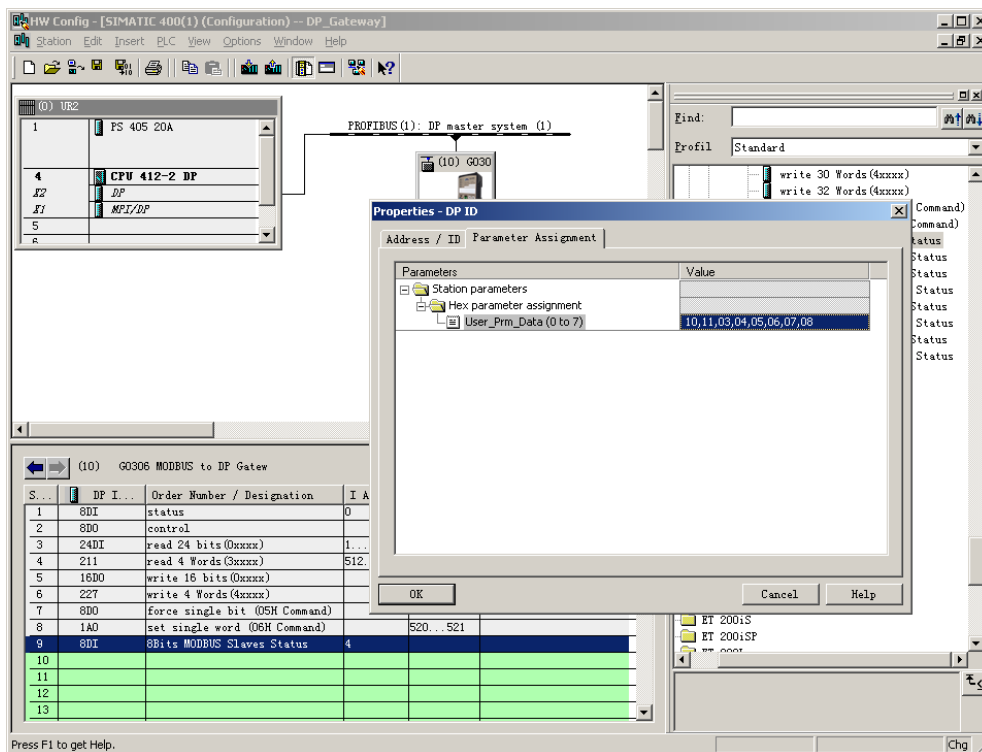


Figure 36 Configure Slave Address to Be Monitored

As shown in Figure 36, each device corresponds to 1 byte module user parameter. In the previous example, total two slave stations (10, 11) is configured, so write the two addresses into the module user parameter.

After running procedure, monitor status of slave station 10 and 11 in PROFIBUS address IB4, shown in the table below:

Table 18 status of slave station 10 and 11 monitored in PROFIBUS address IB4

B7	B6	B5	B4	B3	B2	B1	B0
Not use here	Not use here	Not use here	Not use here	Not use here	Not use here	Communication Status of Address 11	Communication Status of Address 10
--	--	--	--	--	--	0: no response	0: no response
--	--	--	--	--	--	1: with response	1: with response

Gateway B0=0, indicates the gateway sends command to Modbus slave station of address 10 based on current configuration, but timeout no response from slave station or not link slave station of address 10.

B0=1, indicates the gateway sends command to Modbus slave station of address 10 based on current configuration, and the gateway can receive correct response message from slave station.

Meaning of other bits is similar, only different monitoring slave addresses.

Note: if slave quantity is less than monitoring quantity, then configuration order of slave station address shall be from low to high, and configured quantity shall be the same with actual slave station quantity (e.g., in this example, there are 2 slave stations, but the configured module can monitor 8 slave stations, then addresses of the two slave stations can only be configured in B0 and B1. Address order can be reversed, such as B1 monitor address 10, B0 monitor address 11).

- Example: Use xxx Bits Modbus Slave Monitoring Module (Module 203, 205, 207, 209)

a) Configure user parameters of “3.MODBUS Slave Monitoring” device, shown in Figure 37:

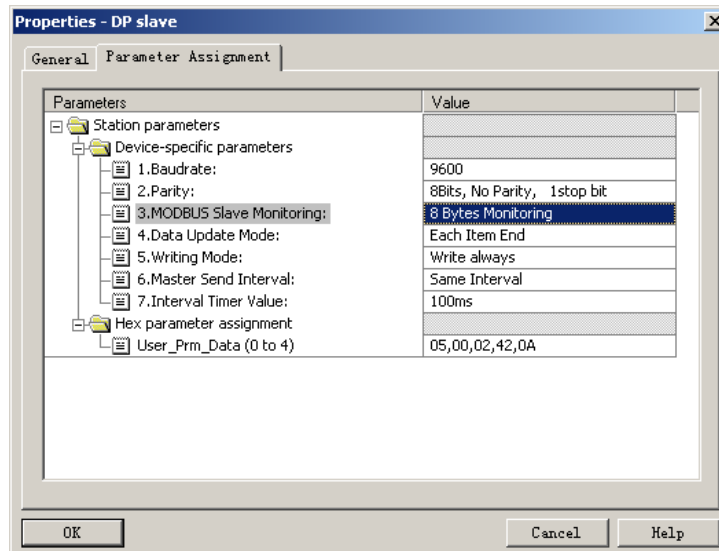


Figure 37 Configure User Parameters of “3.MODBUS Slave Monitoring” Device

As shown in Figure 37, to use xxx bits Modbus slave monitoring module, corresponding Modbus slave monitoring parameters shall be configured in device user parameters. Based on previous 6 examples, here to configure "8 Bits Monitoring", corresponding "8Bits MODBUS Slaves Status" module shall be used.

b) Add “8Bits MODBUS Slaves Status” Module, shown in Figure 38:

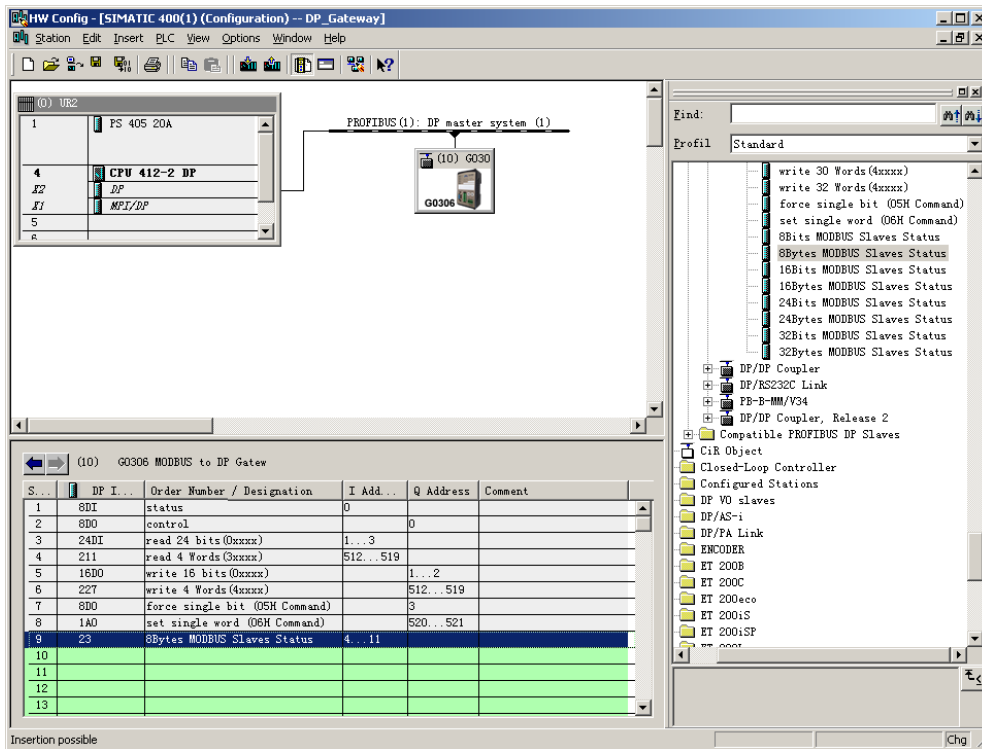


Figure 38 Add “8Bits MODBUS Slaves Status” Module

Previously described, this kind of module must be put after all the Modbus communication modules, so according to previous examples, slot 1-8 already have corresponding modules, then "8Bits MODBUS Slaves Status " module shall be put into slot 9. Select slot 9, double-click "8Bits MODBUS Slaves Status" module. IB4...11 is input data address of gateway assigned by Profibus master station, total 8 bytes, each byte shall be corresponding to Modbus device status to be monitored.

c) **Configure user parameters of “8Bits MODBUS Slaves Status” module, shown in Figure 39:**

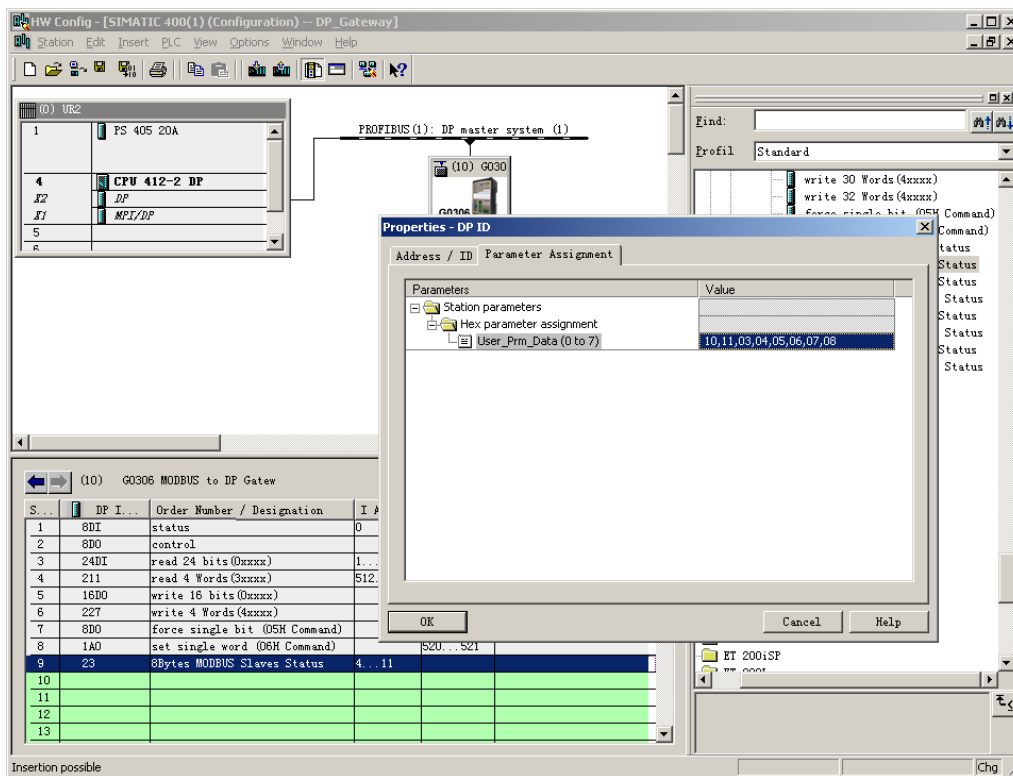


Figure 39 Configure Slave Address to Be Monitored

As shown in Figure 39, each device corresponds to 1 byte module user parameter. In the previous example, total two slave stations (10, 11) is configured, so write the two addresses into to the module user parameter.

After running procedure, can monitor status of 8 slave stations in PROFIBUS address IB4...11. Because in this example there are only two slave stations, then IB4 is status of slave station 10, and IB5 is status of slave station 11.

Table 19 Status of Some Slave Station Monitored

B7: Parity Check	B6:CRC Check	B5:Reserved	B4-B1:Exception Response Code	B0:Response Timeout
0:Current slave parity is correct	0:Current slave CRC is correct		See details in Appendix A.3	0:Current slave response is not timeout
1: Current slave parity is incorrect	1: Current slave CRC is incorrect			1:Current slave response is timeout

This part is different from general state module, each byte is fixed to indicate slave station, status of each slave station can be checked in detail.

Note: if slave quantity is less than monitoring quantity, then configuration order of slave station address shall be from low to high, and configured quantity shall be the same with actual slave station quantity (e.g., in this example, there are 2 slave stations, but the configured module can monitor 8 slave stations, then addresses of the two slave stations can only be configured in the first two bytes. Address order can be reversed, such as IB5 monitor address 10, IB4 monitor address 11).

(2)How to Use GSD File of G0306-SS

● Configure Device User Parameter

As in figure 13, right click on the gateway device, and select “Properties” →”Parameter Assignment”.

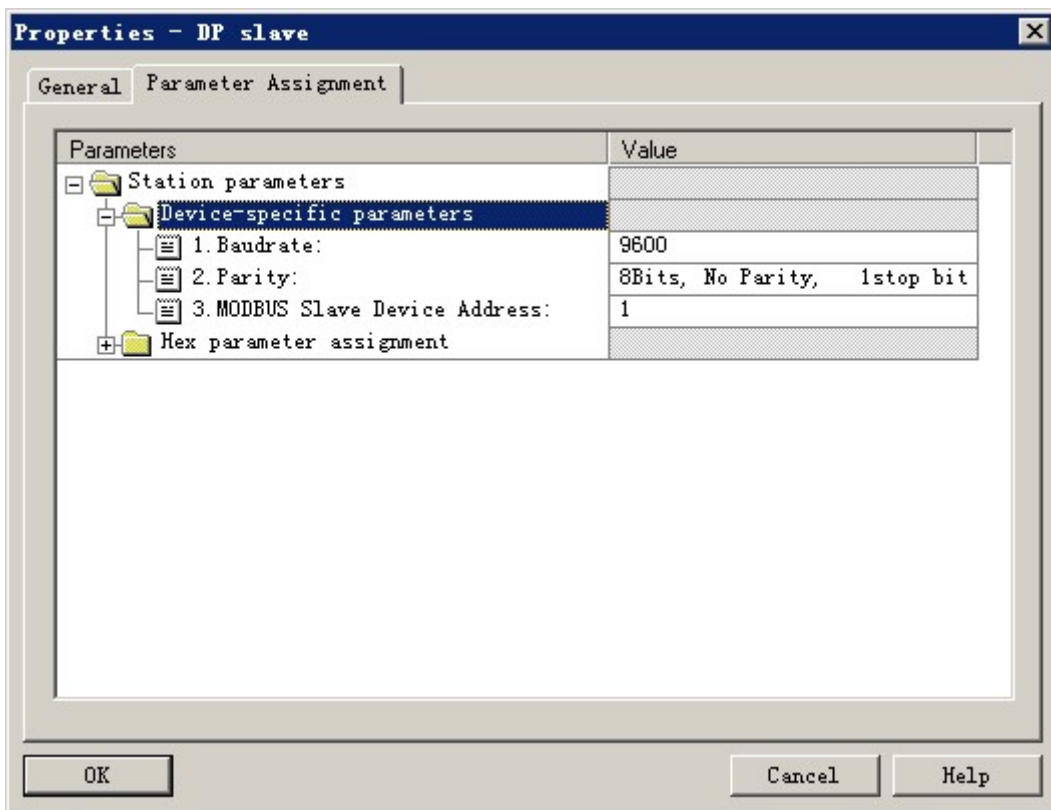


Figure 40 Configure User Parameters of G0306-SS Device

Here all the parameters mentioned in Table 14 can be modified. The user shall modify based actual status. Baud rate that the gateway as Modbus slave station, verify and Modbus slave address, etc. can be configured.

● **Brief Introduction of Configuring Gateway**

Introduced by Chapter 4.3.1 (2), GSD of the gateway includes 20 slots, 67 modules, support 237 user parameters at most. Please refer to Table 13 for each module's illustration.

Slot 1 is fixed as overall state module (module 2), slot 2 is fixed as control module (module 3) and the rest 20 slots can be configured by users.

For example, configuration of "Input: 24 bits(0xxxx)" module (module 6) putting into slot 3: select slot 3, and in the right device list, double click "Input: 24 bits(0xxxx)" to add it into slot 3.

This gateway forms Modbus storage area based on actual configured module order. Following content will introduce how to use each module.

● **Overall State Module (Module 2)**

This module real time displays sending and receiving status of gateway message and check whether message received is abnormal. Abnormal status cannot be eliminated automatically, until eliminating error mark. Method to eliminate error mark refers to control module (module 3)

B7: Parity Check	B6: CRC Check	B5: Reserved	B4-B1: Exception Response Code	B0: Send/Receive
------------------	---------------	--------------	--------------------------------	------------------

0:Current slave parity is correct	0:Current slave CRC is correct	Not apply	See details in Appendix A.3	0:Send message or wait for receiving
1: Current slave parity is incorrect	1: Current slave CRC is incorrect	Not apply		1:Send or process message

a) B0: Send/ Receive

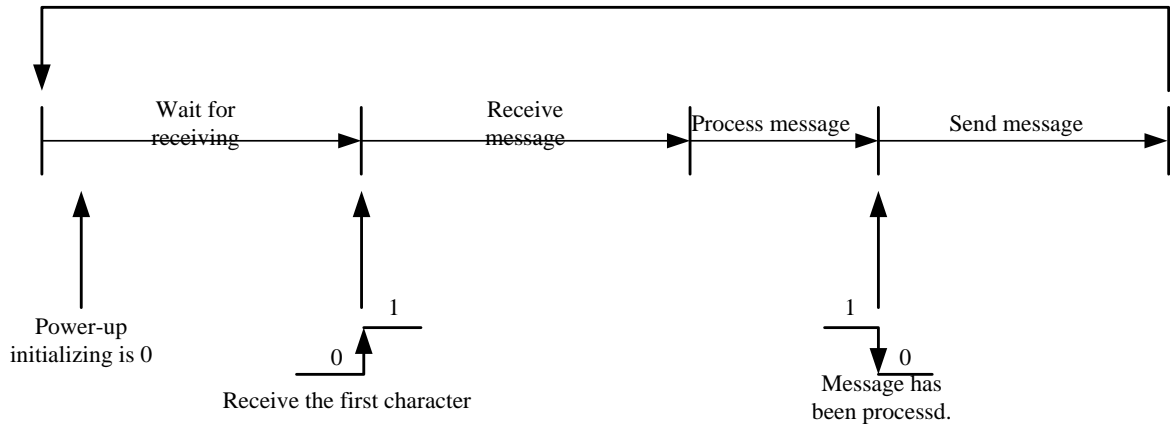


Figure 41 Sending/Receiving Status Transition Diagram

Because G0306-SS is slave station, the gateway automatically turns into the status to wait for receiving after power-up.

b) B4-B1: Exception Response Code

After the gateway receives the message sent by master station, there's no transition error, but the gateway cannot perform master station command or cannot response correctly, the gateway will response with "Exception Response Code". Details are shown in Appendix A.3.

c) B6: CRC Check

When the gateway receives the message with CRC check error, place it in "1". Then the gateway thinks the message is unreliable, don't perform the command and don't response the message.

d) B7: Parity Check

When the gateway receives the data with character parity check error, place it in "1". Then the gateway thinks the MODBUS response data is unreliable, don't perform the command and don't response the message.

● Control Module (Module 3)

This module is used to control Profibus output and eliminate error mark.

Table 20 Format of Control Module

B7: Eliminate Error Mark	B6-B1: Reserved	B0:Profibus Output Enable
0: No eliminating	---	0: Prohibit Profibus output data to enter Modbus 1xxxx and 3xxxx
1: Eliminate error marks B7~B1	---	1: Enable Profibus ouput data enter Modbus 1xxxx and 3xxxx

a) B0: Profibus Output Enable

Control Profibus output data whether to enter Modbus 1xxxx and 3xxxx storage area. All initial storage area data is 0.

b) B7: Eliminate Error Mark

If “1”, eliminate B7-B1 bits of over state module. If “0”, recheck whether exception message is received.

● **Example: Use Input xxx bits Module (Module 4-19)**

To use these modules can correspond the data of Modbus storage area 0xxxx to Profibus input area lx.y. The user may use function codes 1, 5, 15 to operate Modbus storage area 0xxxx.

Take “Input:32 bits(0xxxx)” module as an example, the module corresponds 32 coils of Modbus storage area 0xxxx to Profibus input area.

a) Add “Input: 32 bits(0xxxx)” Module, show in Figure 42:

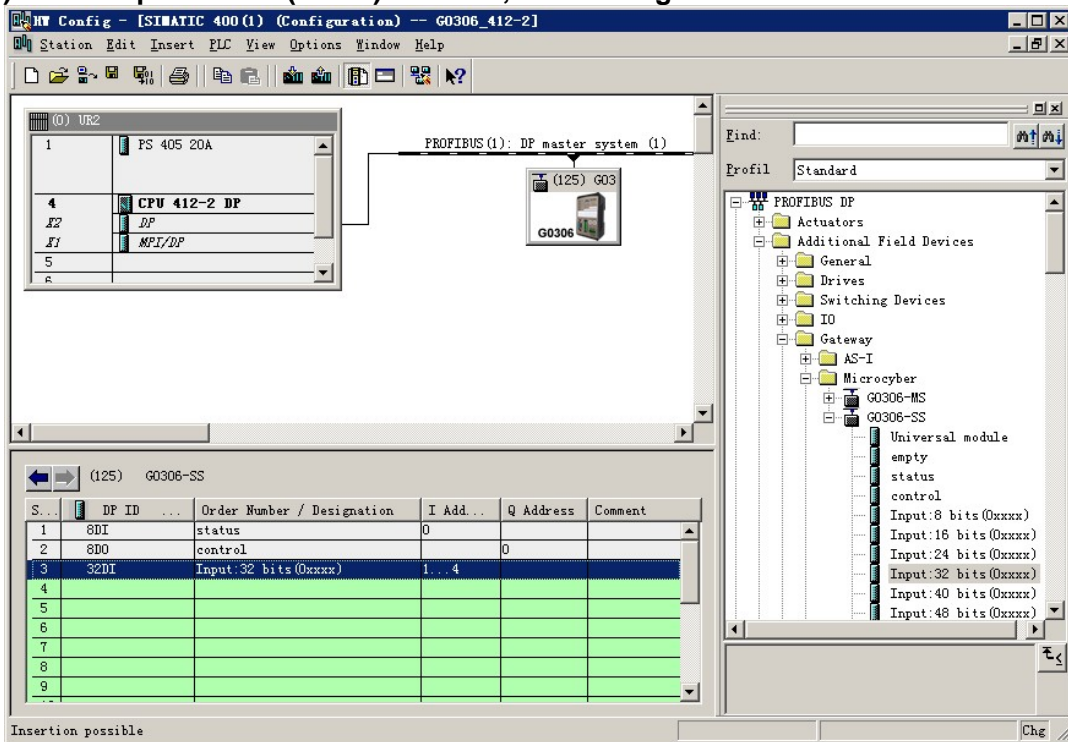


Figure 42 Add “Input:32 bits(0xxxx)” Module

For example, put the module into slot 3, double click “Input: 32 bits(0xxxx)” module. IB1-IB4 are input data address configured to the gateway by Profibus master station, corresponding to Modbus coils 00001-00032.

b) Correspondence between Modbus Storage Area 0xxxx and Profibus Input Area

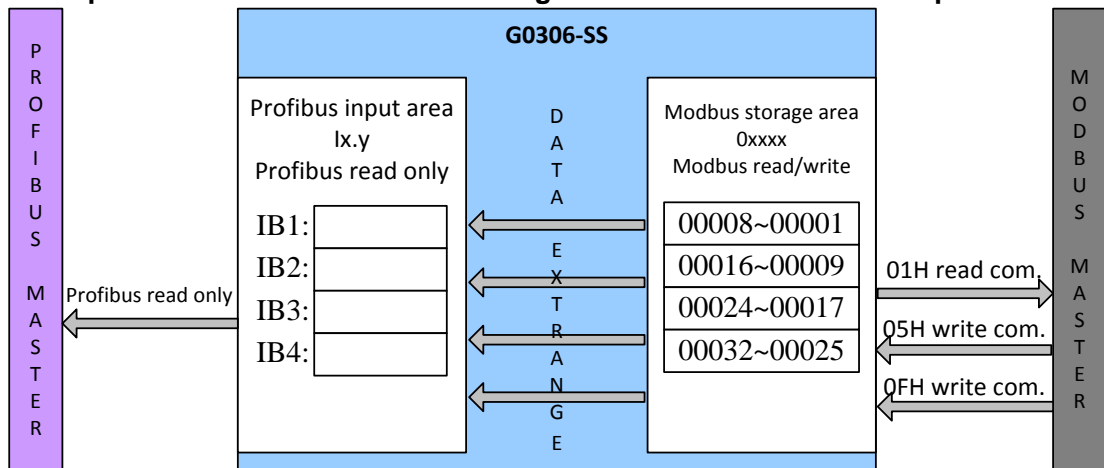


Figure 43 Corresponding Relations between Modbus Storage Area 0xxxx and Profibus Input Area

Note: IBO corresponds to overall state module. Modbus side coil addresss is certain to begin from 00001. When another input xxx bits module is inserted, Modbus coil addresses is assigned in order. For example, insert another “input: 32 bits (0xxxx)” module, addresses are 00033-00064, corresponding to IB5-IB8 of Profibus.

● **Example: Use Output xxx bits module (Module 36-51)**

To use these modules can correspond the data of Profibus output area Qx.y. to Modbus storage area 1xxxx. The user may use function code 2 to operate Modbus storage area 1xxxx.

Take “Output: 32 bits (1xxxx)” module as an example, the module writes 4-byte data of Profibus output area into 32 coils of Modbus storage area 1xxxx.

a) Add “Output:32 bits(1xxxx)” Module, shown in Figure 44:

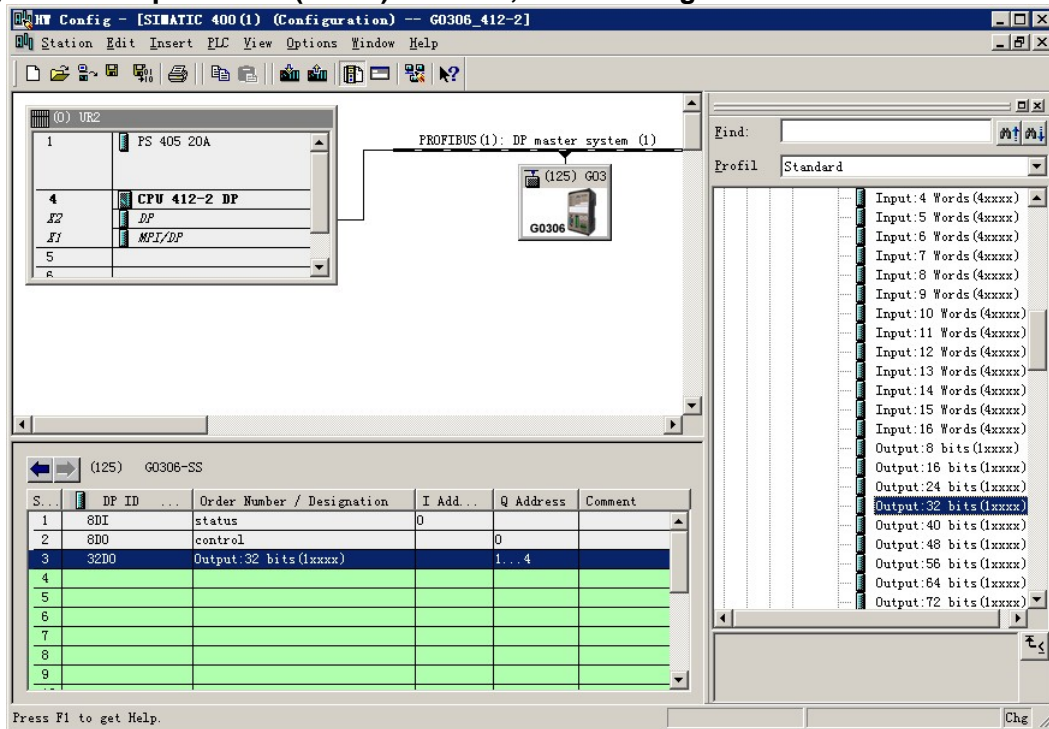


Figure 44 Add “Output: 32 bits(1xxxx)” Module

For example, put the module into slot 3, select slot 3, double click “Output: 32 bits(1xxxx)” module. QB1-QB4 are output data address configured to the gateway by Profibus master station, corresponding to Modbus coils 10001-10032.

b) Corresponding Relations between Modbus Storage Area 1xxxx and Profibus Output Area

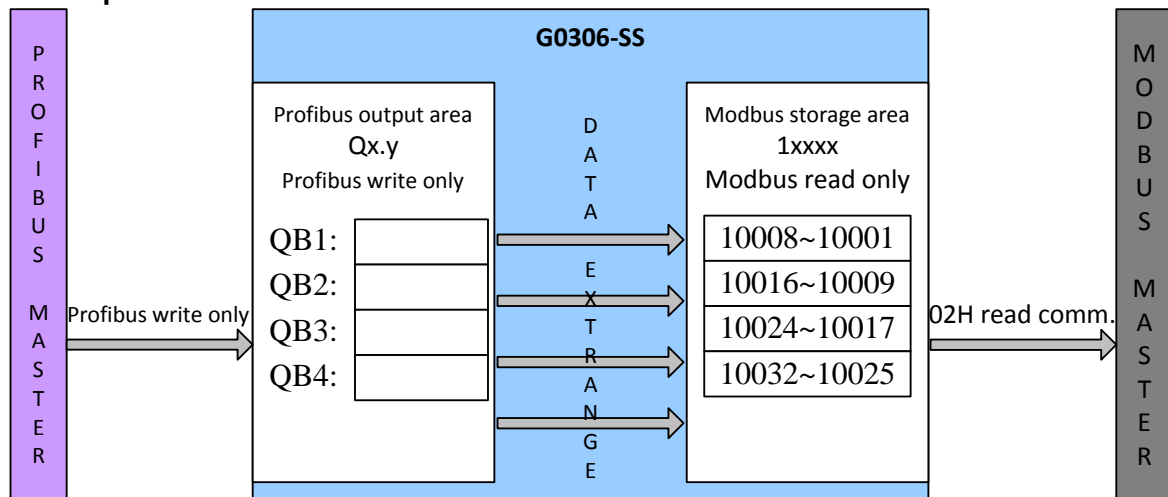


Figure 45 Corresponding Relations between Modbus Storage Area 1xxxx and Profibus Output Area

Note: QB0 corresponds to control module. Modbus side coil address is certain to begin from 10001. When another input xxx bits module is inserted, Modbus coil addresses is

assigned in order. For example, insert another “Output: 32 bits (1xxxx)” module, addresses are 10033-10064, corresponding to QB5-QB8 of Profibus.

● **Example: Use Input xxx bits module (Module 20-35)**

To use these modules can correspond the data of Modbus storage area 4xxxx to Profibus input area lx.y. The user may use function codes 3, 6, 16 to operate Modbus storage area 4xxxx.

Take “Input: 4 Words (4xxxx)” module as an example, the module corresponds 4 registers of Modbus storage area 4xxxx to Profibus input area.

a) **Add “Input: 4 Words(4xxxx)” module, shown as Figure 46:**

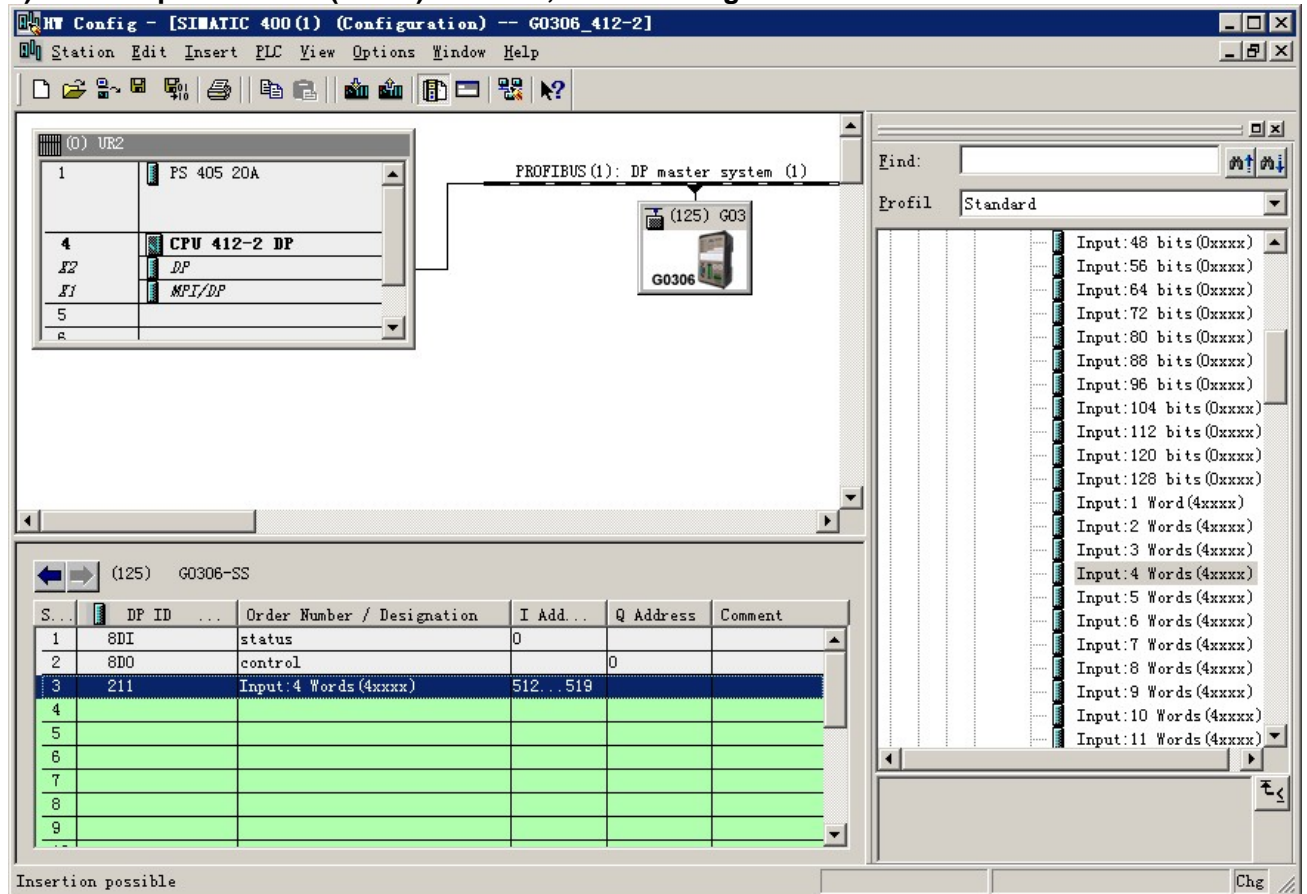


Figure 46 Add “Input: 4 Words (4xxxx)” Module

For example, put the module into slot 3, select slot 3, double click “Input: 4 Words (4xxxx)” module. IW512- IW519 are input data address configured to the gateway by Profibus master station, corresponding to Modbus register 40001-40004.

b) Corresponding Relations between Modbus Storage Area 4xxxx and Profibus Input Area

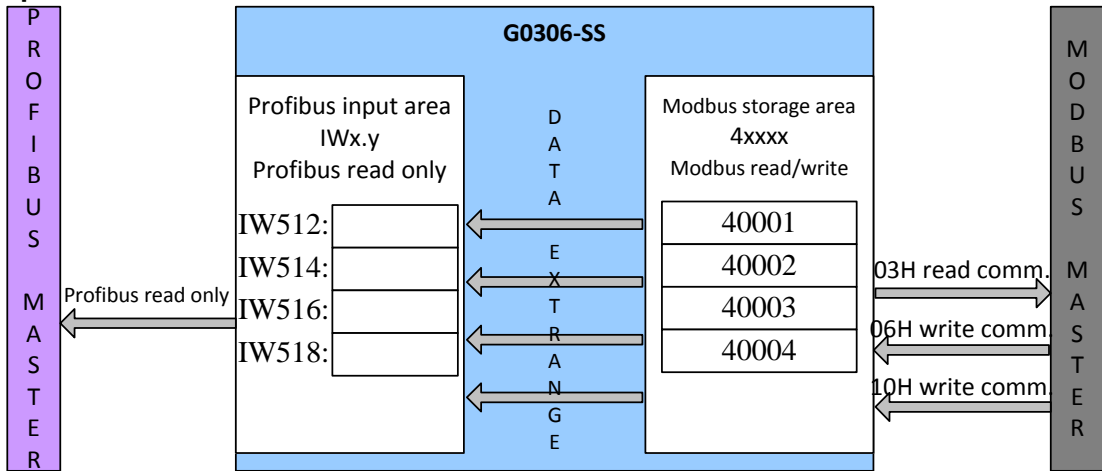


Figure 47 Corresponding Relations between Modbus Storage Area 4xxxx and Profibus Input Area

Note: Modbus side register addresss is certain to begin from 40001. When another input xxx bits module is inserted, Modbus register addresses is assigned in order. For example, insert another “Input: 4 Words (4xxxx)” module, addresses are 40005-40008, corresponding to IW520-IW527 of Profibus.

● **Example: Use Output xxx bits module (Module 52-67)**

To use these modules can correspond the data of Profibus output area Qx.y. to Modbus storage area 3xxxx. The user may use function code 4 to operate Modbus storage area 3xxxx.

Take “Output: 4 Words (3xxxx)” module as an example, the module writes 8-byte data of Profibus output area into 4 registers of Modbus storage area 3xxxx.

a) Add "Output: 4 Words (3xxxx)" module, shown as Figure 48:

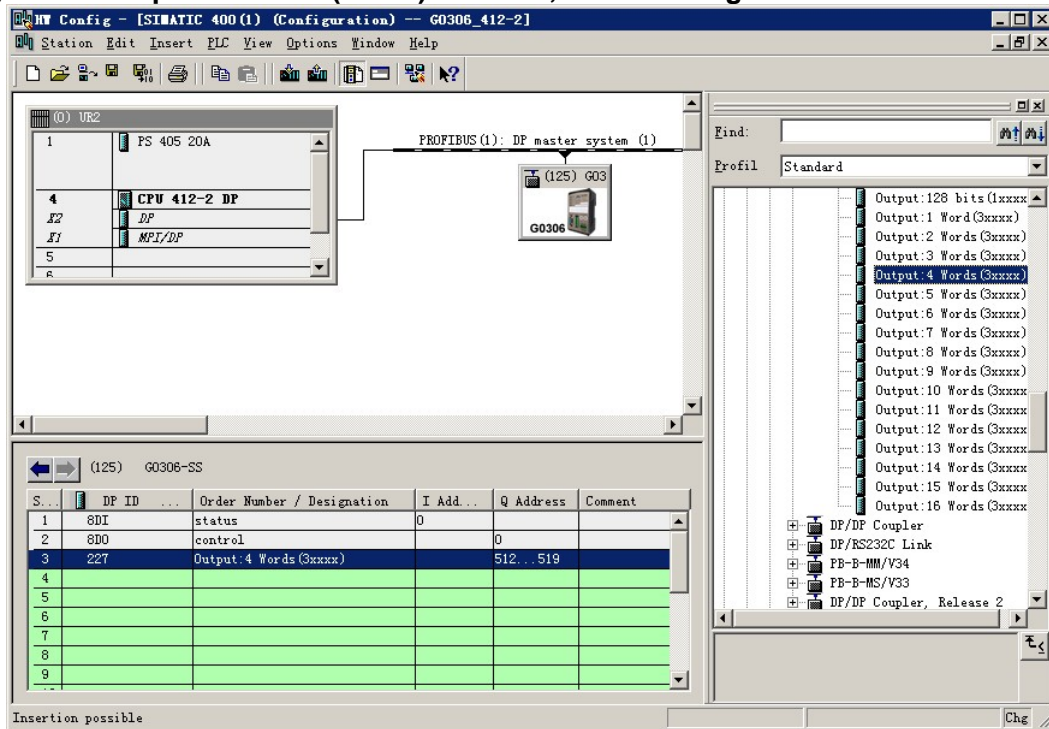


Figure 48 Add "Output: 4 Words (3xxxx)" module, shown as Figure 48

For example, put the module into slot 3, select slot 3, double click "Output: 4 Words (3xxxx)" module. QW512- QW519 is output data address configured to the gateway by Profibus master station, corresponding to Modbus register 30001-30004.

b) Corresponding Relationship between Profibus Output Area and Modbus Storage Area 3xxxx

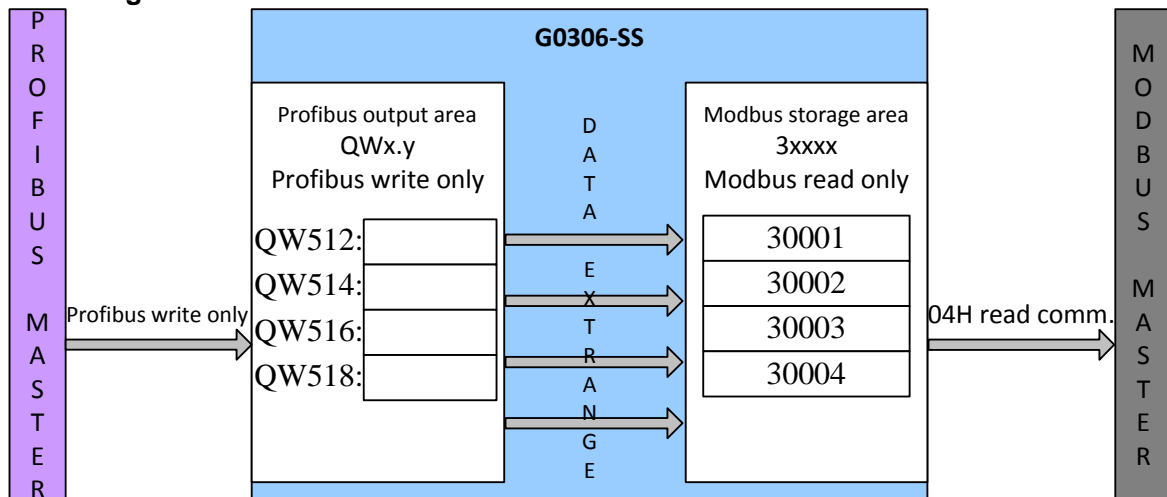


Figure 49 Corresponding Relations between Profibus Output Area and Modbus Storage Area 3xxxx

Note: Modbus side register addresses is certain to begin from 30001. When another output xxx bits module is inserted, Modbus register addresses is assigned in order. For example,

insert another "Output: 4 Words (3xxx)" module, addresses are 30005-30008, corresponding to QW520-QW527 of Profibus.

● Precautions for Use

When using G0306 Modbus to DP Gateway, the following points are easy to be mistaken.

Please pay high attention when using.

- 1 After switching function between G0306-MS and G0306-SS, the device has to be power up again.
- 2 There is a 16-bit address dip switch, but it shall be calculated based on decimal system. For example: 16-bit knob is 0xB, 10-bit knob is 5, then the address is 11 (0xB) *10+5*1=115.
- 3 Detailed diagnostic function of G0306-MS is realized by configuring device user parameter "MODBUS slave station status monitoring" as well as the gateway module "XXX bit/byte MODBUS slave station monitoring module". If the configured parameter of the MODBUS slave station status monitoring is not 0, then the last position of all configured modules shall be configured the corresponding "xxx bit/byte Modbus slave station monitoring module".

Section 5. Maintenance

- Simple Maintenance

Table 21 Status List for LED Indicating Light

LED Indicating Light	Color	Normal Status	Exception Status	Exception Reason	Correction Method
Power	Green	Keep on	Off	Power fault	Check power supply and connection
				Internal fault	Contact technical support
Online	Yellow	Keep on	Off	Configuration error	Test whether there's exception or no hardware configuration
				Address error	Test whether the address matches configuration
				Environment fault	Test whether DP bus connection is correct, and terminal matching is correct
				Internal fault	Contact technical support
Offline	Red	Off	On	Configuration error	Test whether there's exception or no hardware configuration
				Address error	Test whether the address matches configuration
				Environment fault	Test whether DP bus connection is correct, and terminal matching is correct
				Internal fault	Contact technical support
TxD	Green	Flash	Off	Not connect Modbus device	Connect Modbus device correctly
				Configuration error	Test whether module parameters are configured correctly
				Power fault	Check power supply and connection
				Internal fault	Contact technical support
RxD	Yellow	Flash	Off	Not connect Modbus device	Connect Modbus device correctly
				Configuration error	Test whether module parameters are configured correctly
				Power fault	Check power supply and connection
				Internal fault	Contact technical support

- Daily maintenance means cleaning device only.
- Fault maintenance: Please return to the factory if there's fault.
- Configuration error: the following configuration errors will not lead to device's DP side offline, but Modbus communication will be abnormal.

Table 22 Test List for Configuration Errors

No.	Exception Phenomena	Exception Reason	Correction Method
1	Transmit error of partial Modbus commands	Gross state module configuration error	Gross state module is only allowed to be configured in 1st slot, cannot be in the other slots.
2	Transmit error of partial Modbus commands	Control module configuration error	Control module is only allowed to be configured in 2nd slot, cannot be in the other slots.
3	Transmit error of partial Modbus commands	Slave station monitoring module of G0306-M isn't configured to the end.	Please configure slave station monitoring module, corresponding to "MODBUS slave station state monitoring" parameter, to the last effective slot, don't configure it in the middle of communication module.
4	Transmit error of partial Modbus commands	"MODBUS slave station state monitoring" parameter of G0306-M is not matched with the configured slave station monitoring module.	Please use the slave monitoring module nominated by "MODBUS slave station state monitoring" parameter. If "MODBUS slave station state monitoring" parameter doesn't need slave station monitoring module, please

			don't configure it.
5	After transmitting all the configured Modbus commands, a few bytes of data are still been transmitted.	"MODBUS slave station state monitoring" parameter of G0306-M is not matched with the configured slave station monitoring module. And the module's length is longer than the parameter's length.	Please configure slave monitoring module into correspondence with "MODBUS slave station state monitoring" parameter

Section 6. Technical Specifications

6.1 Basic Parameters

Working Voltage	24VDC(±20%)
Rated Current	I _{24V} ≤60mA
Working Temperature	-20℃~70℃
Storage Temperature	-40℃~70℃
Humidity Range	5%~95%RH
Modbus Physical Interface	RS485 (Configurable Terminal) / RS232
Modbus Character Transfer Mode	RTU mode

6.2 Performance Index

Protection Grade	IP20 for outer case grade
Electromagnetic Compatibility	Complied with GB/T 18268.1-2010 FF terminal test method is complied with GB/T 18268.23-2010

6.3 Physical Characteristics

Weight	0.2kg
Structure Material	Case: ABS; Clip: POM; Paint: Polyester epoxy resin

6.4 Default Communication Parameters

General Default Communication Parameters	
Baud Rate	9600
Data Bit	8
Stop Bit	1
Verification	NO
G0306-MS Default Communication Parameters	
MODBUS Slave Station	NO
State Monitoring	
Data Updating Mode	After response of all MD
Writing Mode	Always write
Master Transmit Interval	Slave station's reply is transmitted
Interval Time Value	500ms
Slot	Slot 1: gross state module; slot 2: control module; slot 3~39: no module
G0306-SS Default Communication Parameters	
Modbus Slave Add.	1

6.5 Supportive Modbus Function Code

1	Read coil
2	Read discrete input
3	Read holding register value
4	Read input register value
5	Write single coil
6	Write single register
15	Write multiple coils
16	Write multiple register values

Character	RTU Mode	ASCII Mode
Coding	Binary	ASCII (Printed character: 0-9, a-z, A-Z)
Each Character Bits	Starting bit: 1BIT	Starting Bit: 1BIT
Data Bit	Data bit: 8BITS	Data bit: 7BITS
Verification Bit	Parity bit (optional): 1 bit	Parity bit (optional): 1 bit
Stop Bit	Stop bit: 1 or 2	Stop bit: 1 or 2
Message Verification	CRC(Cyclic Redundancy Check)	LRC(Longitudinal Redundancy Check)

- 1) Transmission Error Check
 - Transmission error check is verified by parity check and redundancy check.
 - When check has error, message handling stops, slave station no longer continues communication, and not responds to the message;
 - Once communication error occurs, a message will be regarded as unreliable; if Modbus master station has not received the reply from slave station after a certain period, "communication error has occurred" judgment will be made.
- 2) Level of message (character) uses CRC-16 (Cyclic Redundancy Check)
- 3) Modbus message RTU format

Table 24 Modbus Message RTU Format

Message Interval Time \geq 3.5 Characters	Address	Function Code	Data	CRC Check	Message Interval Time \geq 3.5 Characters
	1*byte	1*byte	N*bytes	2*bytes	

A.3 Modbus Exception Response

- 1) If slave station receives master request without a communication error, but cannot execute or response correctly, the slave station will return an "exception response".
- 2) Message format of exception response

Example: Master station sends a request message, function code is 01, 1 coil value 0x04A1 is read.

Table 25 Request Message Sent by Master Station (Hex)

Slave Address	Function Code	Starting Address Hi	Starting Address Lo	Quantity of Coils Hi	Quantity of Coils Lo	CRC
0A	01	04	A1	00	01	xxxx

Because coil maximum address of the slave station is 0x0400, 0x04A1 is beyond the maximum address. The slave station returns exception response as below (Note: Maximum bit of function code is 1.)

Table 26 Response Message Returned by Slave Station (Hex)

Slave Address	Function Code	Exception Code	CRC
0A	81	02	xxxx

- 3) Exception Response Code

Table 27 Modbus Exception Response Code

Code	Name	Meaning
0x01	ILLEGAL FUNCTION	The function code received in the query is not an allowable action for the addressed slave station. If there's query sent, this code indicates no programming function previously.
0x02	ILLEGAL DATA ADDRESS	The data address received in the query is not an allowable address for the addressed slave station.
0x03	ILLEGAL DATA VALUE	A value contained in the query data field is not an allowable value for the addressed slave station.
0x04	SLAVE DEVICE FAILURE	An unrecoverable error occurred while the server (or slave station) was attempting to perform the requested action.

A.4 Modbus Storage Area

Storage areas of controller related to Modbus (or Modbus device) is marked by 0xxxx, 1xxxx, 3xxxx, 4xxxx.

Table 28 Modbus Storage Area

Storage Area Sign	Name	Type	Read/Write	Storage Unit Address (Decimal)
-------------------	------	------	------------	--------------------------------

0xxxx	Coil	bit	Read/Write	00001~0xxxx xxxx: related to device
1xxxx	Discrete Input	bit	Read only	10001~1xxxx xxxx: related to device
3xxxx	Input Register	Byte	Read only	30001~3xxxx xxxx: related to device
4xxxx	Holding/Output Register	Byte	Read/Write	40001~4xxxx xxxx: related to device

A.5 Modbus Function Codes

There are three categories of MODBUS Functions codes: public function codes, user-defined function codes, and reserved function codes.

- 1) Public Function Codes
 - Are well defined function codes
 - guaranteed to be unique
 - validated by the MODBUS.org community
 - publicly documented
 - have available conformance test
 - MB IETF RFC documented
 - includes both defined public assigned function codes as well as unassigned function codes reserved for future use
- 2) User-defined Function Codes
 - there are two ranges of user-defined function codes, i.e. 65 to 72 and from 100 to 110 decimal
 - user can select and implement a function code that is not supported by the specification
 - there is no guarantee that the use of the selected function code will be unique
 - if the user wants to re-position the functionality as a public function code, he must initiate an RFC to introduce the change into the public category and to have a new public function code assigned
- 3) Reserved Function Codes
 - Function Codes currently used by some companies for legacy products and that are not available for public use

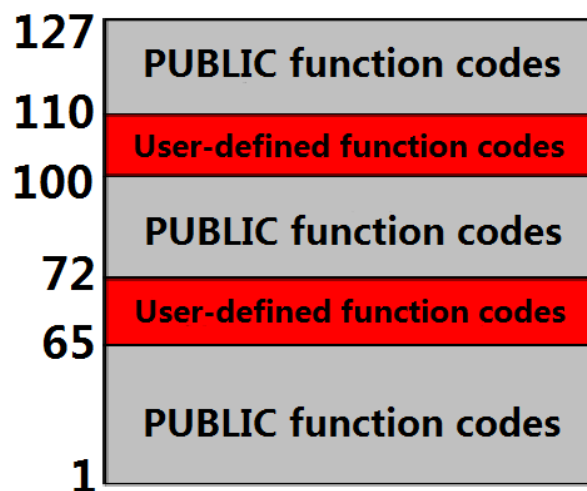


Figure 51 Modbus Function Codes

A.5.1 01 (0x01) Read Coils

Table 29 Master Station Request Message Format (Hex)

Slave Address	Function Code	Coil Starting Address Hi	Coil Starting Address Lo	Coil Quantity Hi	Coil Quantity Lo	CRC
11	01	00	13	00	25	xxxx

Function: Read slave station coil 0xxxx status

Note: In message, coil starting address 00000 is corresponding to address 00001 in the device, and others follow.

This example: Read 17(0x11) slave station's coil, starting address=0x0013=19, corresponding to device address 00020; coil quantity=0x0025=37; end address=00020+37-1=00056.

So function of this request message is: Read 17(0x11) slave station's coil 00020-00056, total 37 coil status.

Table 30 Slave Station Response Message Format (Hex)

Address	Function Code	Byte Count	Coil Status 20-27	Coil Status 28-35	Coil Status 36-43	Coil Status 44-51	Coil Status 52-56	CRC
11	01	05	CD	6B	B2	0E	1B	xxxx

Function: Return coil 0xxxx status from slave station

This example: 0xCD=11001101, corresponding to 00020-00027; 0x6B=01101011, corresponding to 00028-00035; 0xB2=10110010, corresponding to 00036-00043; 0x1B=00011011, corresponding to 00052-00056.

A.5.2 02 (0x02) Read Discrete Inputss

Table 31 Master Station Request Message Format (Hex)

Slave Address	Function Code	Starting Address Hi	Starting Address Lo	Quantity of Inputs Hi	Quantity of Inputs Lo	CRC
11	02	00	C4	00	16	xxxx

Function: Read slave station discrete input 1xxxx status

Note: In message, discrete input starting address 00000 is corresponding to address 10001 in the device, and others follow.

This example: Read 17(0x11) slave station discrete input, starting address=0x00C4=196, corresponding to device address 10197; quantity of discrete input =0x0016=22; end address=10197+22-1=10218.

So function of this request message is: Read 17(0x11) slave station discrete input 10197-10218, total 22 discrete inputs.

Table 32 Slave Station Response Message Format (Hex)

Address	Function Code	Byte Count	Discrete Input 10197-10204	Discrete Input 10205-10212	Discrete Input 10213-10218	CRC
11	02	03	AC	DB	35	xxxx

Function: Return discrete input 1xxxx status from slave station

A.5.3 03 (0x03) Read Holding Registers

Table 33 Master Station Request Message Format (Hex)

Slave Address	Function Code	Register Starting Address Hi	Register Starting Address Lo	Quantity of Register Hi	Quantity of Register Lo	CRC
11	03	00	6B	00	03	xxxx

Function: Read slave station holding register 4xxxx value

Note: In message, register starting address 00000 is corresponding to address 40001 in the device, and others follow.

This example: Read 17(0x11) slave station holding register value, starting address=0x006B=107, corresponding address 40108; quantity of registers =0003; end address=40108+3-1=40110.

So function of this request message is: Read 17(0x11) slave station value of 3 holding registers, 40108—40110.

Table 34 Slave Station Response Message Format (Hex)

Slave	Function	Byte	Register	Register	Register	Register	Register	Register	CRC
-------	----------	------	----------	----------	----------	----------	----------	----------	-----

Address	Code	Count	40108 Hi	40108 Lo	40109 Hi	40109 Lo	40110 Hi	40110 Lo	
11	03	06	02	2B	01	06	2A	64	xxxx

Function: Return value of holding register 40108-40110 from slave station; (40108)=0x022B, (40109)=0x0106, (40110)=0x2A64.

A.5.4 04 (0x04) Read Input Registers

Table 35 Master Station Request Message Format (Hex)

Slave Address	Function Code	Register Starting Address Hi	Register Starting Address Lo	Quantity of Registers Hi	Quantity of Registers Lo	CRC
11	04	00	08	00	01	xxxx

Function: Read slave station input register 3xxxx value

Note: In message, register starting address 00000 is corresponding to address 30001 in the device, and others follow.

This example: Read 17(0x11) slave station input register value, starting address=0x0008=0008, corresponding address 30009; quantity of registers =0001; end address=30009.

So function of this request message is: Read 17(0x11) slave station value of 1 input register 30009.

Table 36 Slave Response Message Format (Hex)

Slave Address	Function Code	Byte Count	Input Register Hi	Input Register Lo	CRC
11	04	02	01	01	xxxx

Function: Return value of input register 30009 from slave station; (30009) =0x0101

A.5.5 05 (0x05) Write Single Coil

Table 37 Master Station Request Message Format (Hex)

Slave Address	Function Code	Coil Address Hi	Coil Address Lo	ON/OFF Sign	ON/OFF Sign	CRC
11	05	00	AC	FF	00	xxxx

Function: Write No.17 slave station coil 0xxxx value.

Note: In message, coil starting address 00000 is corresponding to address 00001 in the device, and others follow.

ON/OFF Sign=0xFF00, set coil to be ON.

ON/OFF Sign=0x0000, set coil to be OFF.

This example: Starting address=0x00AC=172, corresponding address in device is 00173.

So function of this request message is: ON state is written by No.17 slave station coil 00173.

Table 38 Slave Response Message Format (Hex, return original message)

Slave Address	Function Code	Coil Address Hi	Coil Address Lo	ON/OFF Sign	ON/OFF Sign	CRC
11	05	00	AC(172)	FF	00	xxxx

Function: Original message returns after ON is written by No.17 slave station coil 0173.

A.5.6 06 (0x06) Write Single Register

Table 39 Master Station Request Message Format (Hex)

Slave Address	Function Code	Register Address Hi	Register Address Lo	Data Value Hi	Data Value Lo	CRC
11	06	00	87(135)	03	9E	xxxx

Function: Write value of single holding register 4xxxx. In message, register starting address 00000 is corresponding to address 40001 in the device, and others follow.

This example: Write value of single holding register 40136 from No.17 slave station=0x039E.

Table 40 Slave Station Response Message Format (Hex, return original message)

Slave Address	Function Code	Register Address Hi	Register Address Lo	Data Value Hi	Data Value Lo	CRC
11	06	00	87(135)	03	9E	xxxx

Function: After writing value of single holding register 40136 from No. 17 slave station=0x039E, return original message.

A.5.7 15 (0x0F) Write Multiple Coils

Table 41 Master Station Request Message Format (Hex)

Slave Address	Function Code	Coil Address Hi	Coil Address Lo	Quantity of Coils Hi	Quantity of Coils Lo	Byte Count	Coil State 20-27	Coil State 28-29	CRC
11	0F	00	13	00	0A	02	CD	00	xxxx

Function: Write multiple contiguous coils 0xxxx as ON/OFF state.

Note: In message, coil starting address 00000 is corresponding to address 00001 in the device, and others follow.

This example: Write multiple coils of 17(0x11) slave station, coil starting address=0x0013=19, corresponding address 00020; quantity of coils=0x000A=10; end address=00020+10-1=00029.

So function of this request message is: write value of 10 coils 00020-00029 from 17 (0x11) slave stations; inside, address 00020-00027 are written 0xCD, address 00028-00029 are written 0x00.

Table 42 Slave Station Response Message Format (Hex)

Slave Address	Function Code	Coil Address Hi	Coil Address Lo	Quantity of Coils Hi	Quantity of Coils Lo	CRC
11	0F	00	13	00	0A	xxxx

Function: Return coil address and quantity.

A.5.8 16 (0x10) Write Multiple Registers

Table 43 Master Station Request Message Format (Hex)

Address	Function Code	Register Address Hi	Register Address Lo	Quantity of Registers Hi	Quantity of Registers Lo	Byte Count	Data Hi	Data Lo	Data Hi	Data Lo	CRC
11	10	00	13	00	0A	02	CD	00			xxxx

Function: Reset value of multiple holding registers 4xxxx.

Note: In message, holding register starting address 40000 is corresponding to address 40001 in the device, and others follow.

This example: Reset value of multiple holding registers from 17(0x11) slave station, register starting address=0x0087=135, corresponding address 40136; quantity of coils=0x0002=2; end address=40135+2-1=40137.

So function of this request message is: Reset value of 2 holding registers from 17(0x11) slave station; address 40136 is written 0x0105, address 40137 is written 0x0A10.

Table 44 Slave Station Response Message Format (Hex)

Address	Function Code	Register Address Hi	Register Address Lo	Quantity of Registers Hi	Quantity of Registers Lo	CRC
11	10	00	87	00	02	xxxx

Function: Return register address and quantity.

Appendix B Model Selection Table of G0306 Modbus to DP Gateway

GW-MODB-DP		G0306 Modbus to DP Gateway	
		Code	Modbus Physical Interface
		RS485	RS485 Interface
		RS232	RS232 Interface

GW-MODB-DP - RS485	— Sample
--------------------	----------

Microcyber Corporation

Add: 17-8 Wensu Street, Hunnan New District, Shenyang, China 110179

Tel: 86-24-31217278

Fax: 86-24-31217293

E-mail: international@microcyber.cn

Website: www.microcyber.cn

